



# Accessing the WAN

CCNA Exploration Companion Guide



Bob Vachon • Rick Graziani

Cisco | Networking Academy  
Mind Wide Open

FREE SAMPLE CHAPTER



SHARE WITH OTHERS

# Accessing the WAN

## CCNA Exploration Companion Guide

**Bob Vachon**  
**Rick Graziani**

**Cisco Press**

800 East 96th Street

Indianapolis, Indiana 46240 USA

# Accessing the WAN, CCNA Exploration Companion Guide

Bob Vachon, Rick Graziani

Copyright© 2008 Cisco Systems, Inc.

Published by:

Cisco Press

800 East 96th Street

Indianapolis, IN 46240 USA

All rights reserved. No part of this book may be reproduced or transmitted in any form or by any means, electronic or mechanical, including photocopying, recording, or by any information storage and retrieval system, without written permission from the publisher, except for the inclusion of brief quotations in a review.

Printed in the United States of America

Second Printing January 2013

Library of Congress Cataloging-in-Publication Data is on file.

ISBN-13: 978-1-58713-349-7

ISBN-10: 1-58713-349-0

## **Publisher**

Paul Boger

## **Associate Publisher**

Dave Dusthimer

## **Cisco Representative**

Anthony Wolfenden

## **Cisco Press Program Manager**

Jeff Brady

## **Executive Editor**

Mary Beth Ray

## **Production Manager**

Patrick Kanouse

## **Senior Development Editor**

Christopher Cleveland

## **Senior Project Editor**

San Dee Phillips

## **Copy Editor**

Gayle Johnson

## **Technical Editors**

Nolan Fretz

Charles Hannon

Snezhy Neshkova

Matt Swinford

## **Editorial Assistant**

Vanessa Evans

## **Book and Cover Designer**

Louisa Adair

## **Composition**

Mark Shirar

## **Indexer**

Tim Wright

## **Proofreader**

Kathy Ruiz

This book is part of the Cisco Networking Academy® series from Cisco Press. The products in this series support and complement the Cisco Networking Academy curriculum. If you are using this book outside the Networking Academy, then you are not preparing with a Cisco trained and authorized Networking Academy provider.

For more information on the Cisco Networking Academy or to locate a Networking Academy, please visit [www.cisco.com/edu](http://www.cisco.com/edu).



## Trademark Acknowledgments

All terms mentioned in this book that are known to be trademarks or service marks have been appropriately capitalized. Cisco Press or Cisco Systems, Inc. cannot attest to the accuracy of this information. Use of a term in this book should not be regarded as affecting the validity of any trademark or service mark.

## Warning and Disclaimer

This book is designed to provide information about the *Accessing the WAN* course of the Cisco Networking Academy CCNA Exploration curriculum. Every effort has been made to make this book as complete and accurate as possible, but no warranty or fitness is implied.

The information is provided on an “as is” basis. The authors, Cisco Press, and Cisco Systems, Inc. shall have neither liability nor responsibility to any person or entity with respect to any loss or damages arising from the information contained in this book or from the use of the discs or programs that may accompany it.

The opinions expressed in this book belong to the authors and are not necessarily those of Cisco Systems, Inc.

## Corporate and Government Sales

The publisher offers excellent discounts on this book when ordered in quantity for bulk purchases or special sales, which may include electronic versions and/or custom covers and content particular to your business, training goals, marketing focus, and branding interests. For more information, please contact:

### U.S. Corporate and Government Sales

1-800-382-3419

corpsales@pearsontechgroup.com

For sales outside the United States please contact:

### International Sales

international@pearsoned.com

## Feedback Information

At Cisco Press, our goal is to create in-depth technical books of the highest quality and value. Each book is crafted with care and precision, undergoing rigorous development that involves the unique expertise of members of the professional technical community.

Reader feedback is a natural continuation of this process. If you have any comments about how we could improve the quality of this book, or otherwise alter it to better suit your needs, you can contact us through e-mail at [feedback@ciscopress.com](mailto:feedback@ciscopress.com). Please be sure to include the book title and ISBN in your message.

We greatly appreciate your assistance.



**Americas Headquarters**  
Cisco Systems, Inc.  
170 West Tasman Drive  
San Jose, CA 95134-1706  
USA  
[www.cisco.com](http://www.cisco.com)  
Tel: 408 526-4000  
800 553-NETS (6387)  
Fax: 408 527-0883

**Asia Pacific Headquarters**  
Cisco Systems, Inc.  
168 Robinson Road  
#28-01 Capital Tower  
Singapore 068912  
[www.cisco.com](http://www.cisco.com)  
Tel: +65 6317 7777  
Fax: +65 6317 7799

**Europe Headquarters**  
Cisco Systems International BV  
Haarlerbergpark  
Haarlerbergweg 13-19  
1101 CH Amsterdam  
The Netherlands  
[www-europe.cisco.com](http://www-europe.cisco.com)  
Tel: +31 0 800 020 0791  
Fax: +31 0 20 357 1100

Cisco has more than 200 offices worldwide. Addresses, phone numbers, and fax numbers are listed on the Cisco Website at [www.cisco.com/go/offices](http://www.cisco.com/go/offices).

©2007 Cisco Systems, Inc. All rights reserved. CCVP, the Cisco logo, and the Cisco Square Bridge logo are trademarks of Cisco Systems, Inc.; Changing the Way We Work, Live, Play, and Learn is a service mark of Cisco Systems, Inc.; and Access Registrar, Aironet, BPX, Catalyst, CCDA, CCDP, CCIE, CCIIP, CCNA, CCNP, CCSP, Cisco, the Cisco Certified Internetwork Expert logo, Cisco IOS, Cisco Press, Cisco Systems, Cisco Systems Capital, the Cisco Systems logo, Cisco Unity, Enterprise/Solver, EtherChannel, EtherFast, EtherSwitch, Fast Step, Follow Me Browsing, FormShare, GigaDrive, GigaStack, HomeLink, Internet Quotient, IOS, IP/TV, iQ Expertise, the iQ logo, iQ Net Readiness Scorecard, iQuick Study, LightStream, Linksys, MeetingPlace, MGX, Networking Academy, Network Registrar, Packet, PIX, ProConnect, RateMUX, ScriptShare, SlideCast, SMARTnet, StackWise, The Fastest Way to Increase Your Internet Quotient, and TransPath are registered trademarks of Cisco Systems, Inc. and/or its affiliates in the United States and certain other countries.

All other trademarks mentioned in this document or Website are the property of their respective owners. The use of the word partner does not imply a partnership relationship between Cisco and any other company. (0609R)

## About the Authors

**Bob Vachon** is the coordinator of the Computer Systems Technology program at Cambrian College in Sudbury, Ontario, Canada, where he teaches networking infrastructure courses. He has worked and taught in the computer networking and information technology field since 1984. He is a scholar graduate of Cambrian College, and he received the prestigious Teaching Excellence Award in 1997. Vachon has been a Cisco Networking Academy instructor since 1999 and has been CCNP certified since 2002. He has worked with Cisco as team lead, author, CCNP certification assessment developer, and subject matter expert on a variety of projects, including CCNA, CCNP, and global partner training courses. He enjoys playing the guitar and being outdoors, either working in his gardens or white-water canoe tripping.

**Rick Graziani** teaches computer science and computer networking courses at Cabrillo College in Aptos, California. He has worked and taught in the computer networking and information technology fields for almost 30 years. Before that, he worked in IT for various companies, including Santa Cruz Operation, Tandem Computers, and Lockheed Missiles and Space Corporation. He holds an M.A. in computer science and systems theory from California State University Monterey Bay. Graziani also does consulting work for Cisco and other companies. When he is not working, he is most likely surfing. He is an avid surfer who enjoys longboarding at his favorite Santa Cruz surf breaks.

## About the Technical Reviewers

**Nolan Fretz** is a college professor in network and telecommunications engineering technology at Okanagan College in Kelowna, British Columbia. He has almost 20 years of experience in implementing and maintaining IP networks and has been sharing his experiences by educating students in computer networking for the past nine years. He holds a master's degree in information technology.

**Charles Hannon** is an assistant professor of network design and administration at Southwestern Illinois College. He has been a Cisco Certified Academy instructor since 1998. He has a master of arts degree in education from Maryville University in St. Louis. He holds a valid CCNA certification and has eight years of experience in managing information systems. His priority is to empower students to become successful and compassionate lifelong learners.

**Snezhy Neshkova**, CCIE No. 11931, is a technical manager with the Cisco Networking Academy. She has more than 20 years of networking experience including field services and support, management, and networking education. She has developed and taught a number of different courses in the networking field including Cisco Networking Academy curricula. Snezhy holds a master of science degree in computer science from the Technical University of Sofia, Bulgaria.

**Matt Swinford**, associate professor of network design and administration at Southwestern Illinois College, has been an active Cisco Certified Academy instructor since 1999. He is dedicated to fostering a learning environment that produces certified students and quality IT professionals. He has a master of business administration degree from Southern Illinois University at Edwardsville and holds valid CCNP, A+, and Microsoft certifications.

## Dedications

For my wife, Teri. Without your patience and understanding, I would not have been able to participate in this project. Thank you for your love and support throughout the countless hours it took me to complete this book and for your understanding that I still needed time to surf.

—Rick Graziani

To my wife, Judy, who, through good times and hard times, helped me keep body and soul together. Without her support and encouragement, I would not have been involved with this project.

—Bob Vachon

---

## Acknowledgments

### **From Rick Graziani:**

First of all, I want to thank my good friend Bob Vachon for the pleasure of writing this book with him. Bob's expertise with and commitment to the Cisco Networking Academy have always been extraordinary. His work in the creation of this book has been another example of his exceptional talents.

This book was not the work of any one or two individuals but literally was a team effort. Jeremy Creech headed a team that included Gail Behrend, Koksai Cengiz, Don Chipman, Sonya Coker, Allan Johnson, David Kotfila, Jeff Luman, Bob Vachon, Alan Weiler, and me. My sincere gratitude and thanks to Jeremy and the team for letting me be part of such an outstanding team. I am honored and humbled to work with such a fine group of dedicated people. Special thanks to Mary Beth Ray for her patience and understanding throughout this long process. Mary Beth always provided that voice of calm reassurance and guidance whenever needed.

Thank you, Chris Cleveland, for your help in the editing and production stages. I am amazed at the level of cooperation and teamwork required to produce a technical book, and I am grateful for all your help.

Thanks to all the technical editors for providing feedback and suggestions. Nolan Fretz, Charles Hannon, Snezhy Neshkova, and Matt Swinford did more than just technical editing; they helped take these topics and made sure that they were understandable and accurate.

Finally, I want to thank all my students over the years. For some reason, I always get the best students. You make my job fun and are the reason why I love teaching.

### **From Bob Vachon:**

I would first like to thank Rick Graziani for providing guidance and assistance when I needed it most. They say you can measure a man by the amount of respect he gets. Rick, you are a giant. Thank you. It has been a pleasure writing this book with you.

I would also like to thank my friends Jeremy Creech and John Behrens of Cisco for their continued support and for asking me to be part of a great development team. My sincere gratitude to the entire development team for their outstanding contribution. I am honored to work with such a fine group of dedicated people.

Special thanks to the folks at Cisco Press. A big thank-you goes to Mary Beth Ray for providing me the opportunity to be part of this project and to Chris Cleveland for your editing insight and patience. Thanks to the technical editors for providing a fresh set of eyes when reviewing the book.

A great big thanks to the folks at Cambrian College—specifically, Liz Moratz, Geoff Dalton, Sonia Del Missier, and Sylvia Barnard for your encouragement and support. I would also like to thank Betty Freelandt for providing me with the opportunity to discover the Cisco Networking Academy.

Finally, thanks to all my students. You're the reason why we're here. I learn so much from you, and you make me thankful for having the best job in the world!



## **Contents at a Glance**

<b>Chapter 1</b>	<b>Introduction to WANs</b>	<b>1</b>
<b>Chapter 2</b>	<b>PPP</b>	<b>55</b>
<b>Chapter 3</b>	<b>Frame Relay</b>	<b>127</b>
<b>Chapter 4</b>	<b>Network Security</b>	<b>189</b>
<b>Chapter 5</b>	<b>ACLs</b>	<b>309</b>
<b>Chapter 6</b>	<b>Teleworker Services</b>	<b>377</b>
<b>Chapter 7</b>	<b>IP Addressing Services</b>	<b>429</b>
<b>Chapter 8</b>	<b>Network Troubleshooting</b>	<b>525</b>
<b>Appendix</b>	<b>601</b>	
<b>Glossary</b>	<b>637</b>	
<b>Index</b>	<b>655</b>	

---

# Contents

<b>Chapter 1</b>	<b>Introduction to WANs</b>	<b>1</b>
	<b>Objectives</b>	<b>1</b>
	<b>Key Terms</b>	<b>1</b>
	<b>Introducing Wide-Area Networks (WANs)</b>	<b>3</b>
	What Is a WAN?	3
	Why Are WANs Necessary?	5
	<b>The Evolving Enterprise</b>	<b>5</b>
	Businesses and Their Networks	5
	Small Office (Single LAN)	6
	Campus (Multiple LANs)	6
	Branch (WAN)	8
	Distributed (Global)	9
	<b>The Evolving Network Model</b>	<b>11</b>
	The Hierarchical Design Model	11
	The Enterprise Architecture	13
	<b>WAN Technology Concepts</b>	<b>17</b>
	WAN Technology Overview	17
	WAN Physical Layer Concepts	18
	WAN Data Link Layer Concepts	23
	WAN Switching Concepts	26
	<b>WAN Connection Options</b>	<b>29</b>
	WAN Link Connection Options	29
	Dedicated Connection Link Options	31
	Circuit-Switched Connection Options	32
	Packet-Switched Connection Options	35
	Internet Connection Options	38
	Choosing a WAN Link Connection	44
	<b>Summary</b>	<b>48</b>
	<b>Labs</b>	<b>49</b>
	<b>Check Your Understanding</b>	<b>50</b>
	<b>Challenge Questions and Activities</b>	<b>54</b>

## **Chapter 2 PPP 55**

### **Objectives 55**

### **Key Terms 55**

### **Introducing Serial Communications 56**

How Does Serial Communication Work? 56

Serial Communication Standards 59

TDM 61

Demarcation Point 66

Data Terminal Equipment and Data Communications Equipment 67

HDLC Encapsulation 72

Configuring HDLC Encapsulation 75

Troubleshooting Serial Interfaces 76

### **PPP Concepts 83**

Introducing PPP 83

PPP Layered Architecture 84

PPP Frame Structure 87

Establishing a PPP Session 88

Establishing a Link with LCP 89

NCP Explained 95

PPP Configuration Options 97

PPP Configuration Commands 98

Verifying a Serial PPP Encapsulation Configuration 101

Troubleshooting PPP Encapsulation 102

PPP Authentication Protocols 108

Password Authentication Protocol 109

Challenge Handshake Authentication Protocol (CHAP) 110

PPP Encapsulation and Authentication Process 112

Configuring PPP with Authentication 115

Troubleshooting a PPP Configuration with Authentication 118

### **Summary 120**

### **Labs 120**

### **Check Your Understanding 122**

### **Challenge Questions and Activities 126**

---

<b>Chapter 3</b>	<b>Frame Relay</b>	<b>127</b>
	<b>Objectives</b>	<b>127</b>
	<b>Key Terms</b>	<b>127</b>
	<b>Introduction</b>	<b>128</b>
	<b>Basic Frame Relay Concepts</b>	<b>128</b>
	Introducing Frame Relay	128
	Virtual Circuits	134
	Frame Relay Encapsulation	140
	Frame Relay Topologies	141
	Frame Relay Address Mapping	145
	<b>Configuring Frame Relay</b>	<b>152</b>
	Enabling Frame Relay Encapsulation	153
	Configuring Static Frame Relay Maps	156
	<b>Advanced Frame Relay Concepts</b>	<b>159</b>
	Solving Reachability Issues	159
	Frame Relay Subinterfaces	161
	Paying for Frame Relay	162
	Frame Relay Flow Control	166
	<b>Configuring Advanced Frame Relay</b>	<b>168</b>
	Configuring Frame Relay Subinterfaces	168
	Verifying Frame Relay Operation	171
	Troubleshooting Frame Relay Configuration	178
	<b>Summary</b>	<b>180</b>
	<b>Labs</b>	<b>181</b>
	<b>Check Your Understanding</b>	<b>182</b>
	<b>Challenge Questions and Activities</b>	<b>188</b>
	<b>To Learn More</b>	<b>188</b>
<b>Chapter 4</b>	<b>Network Security</b>	<b>189</b>
	<b>Objectives</b>	<b>189</b>
	<b>Key Terms</b>	<b>189</b>
	<b>Introduction to Network Security</b>	<b>190</b>
	Why Is Network Security Important?	190
	Common Security Threats	199
	Types of Network Attacks	206

General Mitigation Techniques 219

The Network Security Wheel 226

The Enterprise Security Policy 229

**Securing Cisco Routers 232**

Router Security Issues 232

Applying Cisco IOS Security Features to Routers 235

**Securing Router Network Services 250**

Vulnerable Router Services and Interfaces 250

Securing Routing Protocols 256

Locking Down Your Router with Cisco AutoSecure 263

**Using Cisco SDM 264**

Cisco SDM Overview 264

Configuring Your Router to Support SDM 265

Starting SDM 267

The SDM Interface 269

Cisco SDM Wizards 272

Locking Down a Router with SDM 272

**Secure Router Management 275**

Maintaining Cisco IOS Software Images 275

Managing Cisco IOS Images 276

Managing Cisco IOS Images 283

Backing Up and Upgrading a Software Image 284

Recovering Software Images 288

Troubleshooting Cisco IOS Configurations 294

Recovering a Lost Password 297

**Summary 301**

**Labs 301**

**Check Your Understanding 302**

**Challenge Questions and Activities 308**

**Chapter 5 ACLs 309**

**Objectives 309**

**Key Terms 309**

---

<b>Using ACLs to Secure Networks</b>	<b>310</b>
A TCP Conversation	310
Packet Filtering	313
What Is an ACL?	316
ACL Operation	318
Types of Cisco ACLs	322
How a Standard ACL Works	323
Numbering and Naming ACLs	323
Where to Place ACLs	324
General Guidelines for Creating ACLs	327
<b>Configuring Standard ACLs</b>	<b>327</b>
Entering Criteria Statements	327
Configuring a Standard ACL	328
ACL Wildcard Masking	332
Applying Standard ACLs to Interfaces	339
Editing Numbered ACLs	343
Creating Standard Named ACLs	345
Monitoring and Verifying ACLs	346
Editing Named ACLs	347
<b>Configuring an Extended ACL</b>	<b>348</b>
Extended ACLs	349
Configuring Extended ACLs	351
Applying Extended ACLs to the Interfaces	353
Creating Named Extended ACLs	355
<b>Configure Complex ACLs</b>	<b>357</b>
What Are Complex ACLs?	357
Dynamic ACLs	358
Reflexive ACLs	360
Time-Based ACLs	363
Troubleshooting Common ACL Errors	364
<b>Summary</b>	<b>368</b>
<b>Labs</b>	<b>368</b>
<b>Check Your Understanding</b>	<b>369</b>
<b>Challenge Questions and Activities</b>	<b>375</b>

<b>Chapter 6</b>	<b>Teleworker Services</b>	<b>377</b>
	<b>Objectives</b>	<b>377</b>
	<b>Key Terms</b>	<b>377</b>
	<b>Business Requirements for Teleworker Services</b>	<b>379</b>
	The Business Requirements for Teleworker Services	379
	The Teleworker Solution	380
	<b>Broadband Services</b>	<b>384</b>
	Connecting Teleworkers to the WAN	384
	Cable	385
	DSL	391
	Broadband Wireless	396
	<b>VPN Technology</b>	<b>401</b>
	VPNs and Their Benefits	402
	Types of VPNs	405
	VPN Components	407
	Characteristics of Secure VPNs	408
	VPN Tunneling	409
	VPN Data Confidentiality and Integrity	410
	IPsec Security Protocols	416
	<b>Summary</b>	<b>419</b>
	<b>Labs</b>	<b>419</b>
	<b>Check Your Understanding</b>	<b>419</b>
	<b>Challenge Questions and Activities</b>	<b>423</b>
<b>Chapter 7</b>	<b>IP Addressing Services</b>	<b>429</b>
	<b>Objectives</b>	<b>429</b>
	<b>Key Terms</b>	<b>429</b>
	<b>Introduction</b>	<b>431</b>
	<b>DHCP</b>	<b>431</b>
	Introduction to DHCP	432
	DHCP Operation	432
	BOOTP and DHCP	435

Configuring a Cisco Router as a DHCP Server 440

Configuring a DHCP Client 447

DHCP Relay 449

Configuring a DHCP Server Using SDM 453

Troubleshooting DHCP Configuration 456

## **Scaling Networks with NAT 460**

What Is NAT? 462

Benefits and Drawbacks of Using NAT 468

Configuring Static NAT 470

Configuring Dynamic NAT 471

Configuring NAT Overload for a Single Public IP Address 473

Configuring NAT Overload for a Pool of Public IP Addresses 475

Configuring Port Forwarding 477

Verifying NAT and NAT Overload 479

Troubleshooting NAT and NAT Overload Configuration 483

## **IPv6 485**

Reasons for Using IPv6 489

IPv6 Addressing 493

IPv6 Transition Strategies 499

Cisco IOS Dual Stack 500

IPv6 Tunneling 502

Routing Configurations with IPv6 503

Configuring IPv6 Addresses 506

Configuring RIPng with IPv6 508

## **Summary 512**

## **Labs 512**

## **Check Your Understanding 514**

## **Challenge Questions and Activities 522**



<b>Chapter 8</b>	<b>Network Troubleshooting</b>	<b>525</b>
	<b>Objectives</b>	<b>525</b>
	<b>Key Terms</b>	<b>525</b>
	<b>Establishing the Network Performance Baseline</b>	<b>526</b>
	Documenting Your Network	526
	Network Documentation Process	533
	Why Is Establishing a Network Baseline Important?	535
	Steps for Establishing a Network Baseline	535
	<b>Troubleshooting Methodologies and Tools</b>	<b>541</b>
	A General Approach to Troubleshooting	541
	Using Layered Models for Troubleshooting	541
	General Troubleshooting Procedures	544
	Troubleshooting Methods	545
	Gathering Symptoms	548
	Troubleshooting Tools	551
	<b>Review of WAN Communications</b>	<b>560</b>
	WAN Communications	560
	Steps in WAN Design	561
	WAN Traffic Considerations	562
	WAN Topology Considerations	564
	WAN Connection Technologies	567
	WAN Bandwidth Considerations	568
	Common WAN Implementations Issues	569
	WAN Troubleshooting from an ISP's Perspective	570
	<b>Network Troubleshooting</b>	<b>571</b>
	Physical Layer Troubleshooting	573
	Data Link Layer Troubleshooting	577
	Network Layer Troubleshooting	584
	Transport Layer Troubleshooting	586
	Application Layer Troubleshooting	589

**Summary 595**

**Labs 595**

**Check Your Understanding 596**

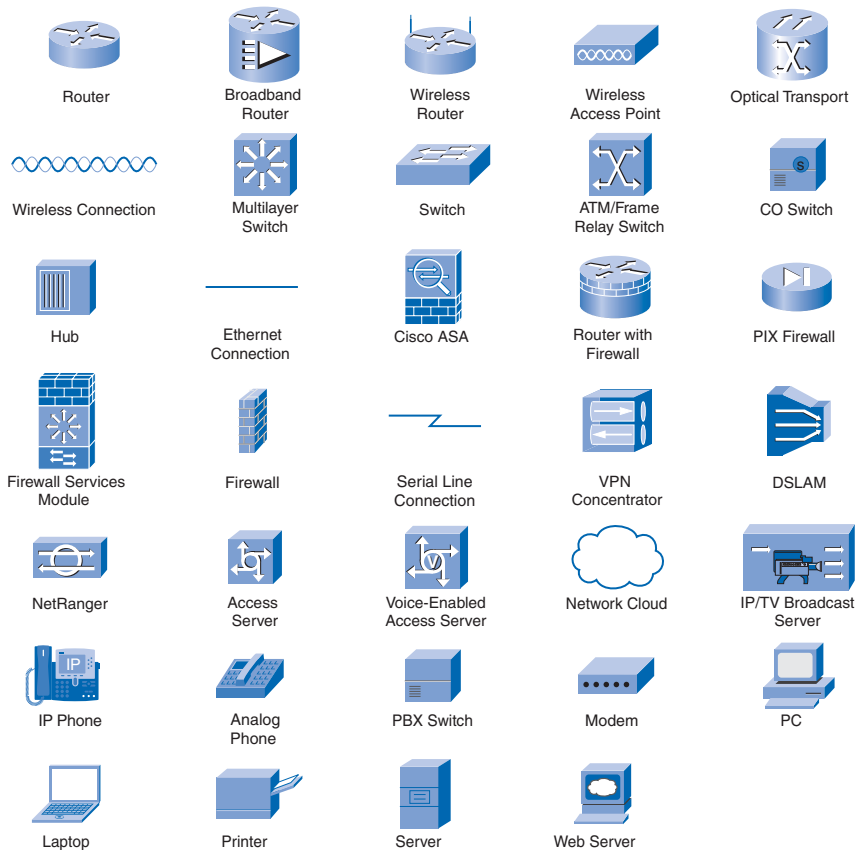
**Challenge Questions and Activities 600**

**Appendix 601**

**Glossary 637**

**Index 655**

## Icons Used in This Book



## Command Syntax Conventions

The conventions used to present command syntax in this book are the same conventions used in the IOS Command Reference. The Command Reference describes these conventions as follows:

- **Bold** indicates commands and keywords that are entered literally as shown. In actual configuration examples and output (not general command syntax), bold indicates commands that the user enters (such as a **show** command).
- *Italic* indicates arguments for which you supply actual values.
- Vertical bars (|) separate alternative, mutually exclusive elements.
- Square brackets ( [ ] ) indicate an optional element.
- Braces ( { } ) indicate a required choice.
- Braces within brackets ( [ { } ] ) indicate a required choice within an optional element.

## Introduction

The Cisco Networking Academy is a comprehensive e-learning program that provides students with Internet technology skills. A Networking Academy delivers web-based content, online assessment, student performance tracking, and hands-on labs to prepare students for industry-standard certifications. The CCNA curriculum includes four courses oriented around the topics on the Cisco Certified Network Associate (CCNA) certification.

*Accessing the WAN, CCNA Exploration Companion Guide* is the official supplement textbook to be used with version 4 of the CCNA Exploration Accessing the WAN online curriculum of the Networking Academy.

This book goes beyond earlier editions of the Cisco Press *Companion Guides* by providing many alternative explanations and examples as compared with the course. You can use the online curriculum as normal and use this *Companion Guide* to help solidify your understanding of all the topics through the alternative examples.

The basis for this book as well as the online curriculum is to help you understand several WAN technologies, including PPP and Frame Relay, and related topics, such as access control lists and Network Address Translation. This book also introduces other WAN technologies, such as DSL, cable modems, and Virtual Private Networks (VPNs).

## Goals of This Book

First and foremost, by providing a fresh, complementary perspective on the topics, this book is intended to help you learn all the required materials of the Exploration Accessing the WAN course in the Networking Academy CCNA curriculum. As a secondary goal, the text is intended as a mobile replacement for the online curriculum for individuals who do not always have Internet access. In those cases, you can instead read the appropriate sections of the book, as directed by your instructor, and learn the same material that is covered in the online curriculum. Another secondary goal is to serve as your offline study material and help you prepare for the CCNA exam.

## Audience for This Book

This book's main audience is anyone taking the CCNA Exploration Accessing the WAN course of the Cisco Networking Academy curriculum. Many Academies use this textbook as a required tool in the course, and other Academies recommend the Companion Guides as an additional source of study and practice materials.

The secondary audience for this book includes people taking CCNA-related classes from professional training organizations. This book can also be used for college- and university-level networking courses, as well as by anyone who wants to gain a detailed understanding of wide-area networks.

## Book Features

The educational features of this book focus on supporting topic coverage, readability, and practice of the course material to facilitate your full understanding of the course material.

### Topic Coverage

The following features give you a thorough overview of the topics covered in each chapter so that you can make constructive use of your study time:

- **Objectives:** Listed at the beginning of each chapter, the objectives reference the core concepts covered in the chapter. The objectives match the objectives stated in the corresponding chapters of the online curriculum. However, the question format in the *Companion Guide* encourages you to think about finding the answers as you read the chapter.
- **“How-to” feature:** When this book covers a set of steps that you need to perform for certain tasks, this book lists the steps as a how-to list. When you are studying, the How To icon helps you easily find this feature as you skim through the book.
- **Notes, tips, cautions, and warnings:** These are sidebars that point out interesting facts, time-saving methods, and important safety issues.
- **Chapter summaries:** At the end of each chapter is a summary of the chapter’s key concepts. It provides a synopsis of the chapter and serves as a study aid.



### Readability

The authors have compiled, edited, and in some cases rewritten the material so that it has a more conversational tone that follows a consistent and accessible reading level. In addition, the following features have been updated to aid your understanding of the networking vocabulary:

- **Key terms:** Each chapter begins with a list of key terms, along with a page number reference. The terms are listed in the order in which they are explained in the chapter. This handy reference allows you to see a term, flip to the page where it appears, and see it used in context. The glossary defines all the key terms.
- **Glossary:** This book contains an all-new glossary with more than 240 terms.

## Practice

Practice makes perfect. This new *Companion Guide* offers you ample opportunities to put what you learn into practice. You will find the following features valuable and effective in reinforcing the instruction that you receive:

- **Check Your Understanding questions and answer key:** Updated review questions are presented at the end of each chapter as a self-assessment tool. These questions match the style of questions that you see in the online course. The appendix, “Check Your Understanding and Challenge Questions Answer Key,” provides the answers to all the questions and includes an explanation of each answer.
- **(New) Challenge questions and activities:** Additional—and more challenging—review questions and activities are presented at the end of each chapter. These questions are designed to be similar to the more complex styles of questions you might see on the CCNA exam. This section might also include activities to help prepare you for the exams. Appendix A provides the answers.
- **Packet Tracer activities:** Interspersed throughout the chapters, you’ll find many opportunities to work with the Cisco Packet Tracer tool. Packet Tracer allows you to create networks, visualize how packets flow in the network, and use basic testing tools to determine whether the network would work. When you see this icon, you can use Packet Tracer with the listed file to perform a task suggested in this book. The activity files are available on this book’s CD-ROM; Packet Tracer software is available through the Academy Connection website. Ask your instructor for access to Packet Tracer.

Packet Tracer  
 Activity

## Labs and Study Guide

The supplementary book *Accessing the WAN, CCNA Exploration Labs and Study Guide* by Cisco Press (ISBN: 1-58713-201-x) contains all the labs from the curriculum plus additional challenge labs and study guide material. The end of each chapter of this *Companion Guide* indicates with icons what labs, activities, and Packet Tracer activities are available in the *Labs and Study Guide*.



- **Lab references:** This icon notes the hands-on labs created for this chapter in the online curriculum. In *Accessing the WAN, CCNA Exploration Labs and Study Guide* you will also find additional labs and study guide material created by the author of that book.
- **(New) Packet Tracer Companion activities:** Many of the hands-on labs include Packet Tracer Companion activities, where you can use Packet Tracer to complete a simulation of the lab. Look for this icon in *Accessing the WAN, CCNA Exploration Labs and Study Guide* for hands-on labs that have a Packet Tracer Companion.

Packet Tracer  
 Companion

**Packet Tracer  
Challenge**

- **(New) Packet Tracer Skills Integration Challenge activities:** These activities require you to pull together several skills you learned from the chapter to successfully complete one comprehensive exercise. Look for this icon in *Accessing the WAN, CCNA Exploration Labs and Study Guide* for instructions on how to perform the Packet Tracer Skills Integration Challenge for this chapter.

## A Word About Packet Tracer Software and Activities

Packet Tracer is a self-paced, visual, interactive teaching and learning tool developed by Cisco. Lab activities are an important part of networking education. However, lab equipment can be a scarce resource. Packet Tracer provides a visual simulation of equipment and network processes to offset the challenge of limited equipment. Students can spend as much time as they like completing standard lab exercises through Packet Tracer, and they have the option to work from home. Although Packet Tracer is not a substitute for real equipment, it allows students to practice using a command-line interface. This “e-doing” capability is a fundamental component of learning how to configure routers and switches from the command line.

Packet Tracer version 4.x is available only to Cisco Networking Academies through the Academy Connection website. Ask your instructor for access to Packet Tracer.

The course essentially includes three different types of Packet Tracer activities. This book uses icons to indicate which type of Packet Tracer activity is available. The icons are intended to give you a sense of the activity’s purpose and the amount of time you’ll need to complete it. The three types of Packet Tracer activities are as follows:

**Packet Tracer  
Activity**

- **Packet Tracer Activity:** This icon identifies straightforward exercises interspersed throughout the chapters, where you can practice or visualize a specific topic. The activity files for these exercises are available on the book’s CD-ROM. These activities take less time to complete than the Packet Tracer Companion and Challenge activities.

**Packet Tracer  
Companion**

- **Packet Tracer Companion:** This icon identifies exercises that correspond to the course’s hands-on labs. You can use Packet Tracer to complete a simulation of the hands-on lab or complete a similar “lab.” The *Companion Guide* points these out at the end of each chapter, but look for this icon and the associated exercise file in *Accessing the WAN, CCNA Exploration Labs and Study Guide* for hands-on labs that have a Packet Tracer Companion.

**Packet Tracer  
Challenge**

- **Packet Tracer Skills Integration Challenge:** This icon identifies activities that require you to pull together several skills you learned from the chapter to successfully complete one comprehensive exercise. The *Companion Guide* points these out at the end of each chapter, but look for this icon in *Accessing the WAN, CCNA Exploration Labs and Study Guide* for instructions on how to perform the Packet Tracer Skills Integration Challenge for this chapter.

---

## How This Book Is Organized

The book covers the major topic headings in the same sequence as the online curriculum for the CCNA Exploration Accessing the WAN course. This book has eight chapters, with the same numbers and similar names as the online course chapters.

If you're reading this book without being in the CCNA Accessing the WAN class, or if you're just using this book for self-study, the sequence of topics in each chapter provides a logical sequence for learning the material presented.

- **Chapter 1, “Introduction to WANs,”** provides an overview of the options available for designing enterprise WANs, the technologies available to implement them, and the terminology used to discuss them. You will learn about selecting the appropriate WAN technologies, services, and devices to meet the changing business requirements of an evolving enterprise.
- **Chapter 2, “PPP,”** examines PPP, including its roots in HDLC, PPP concepts, PPP layered architecture, and configuring PPP. Configuring PPP with authentication using PAP and CHAP are also discussed.
- **Chapter 3, “Frame Relay,”** examines the Frame Relay protocol. Basic Frame Relay concepts are discussed, including encapsulation, topologies, and address mapping. Various Frame Relay configuration techniques are examined, including the use of static Frame Relay maps, the use of inverse ARP, and configuring Frame Relay on subinterfaces.
- **Chapter 4, “Network Security,”** covers the threats and attacks that face many of today's networks. Security policies and mitigation techniques are discussed. Securing networks and devices is examined, including an introduction to Cisco SDM. Managing Cisco IOS images is also discussed in this chapter, including password recovery and restoring IOS images.
- **Chapter 5, “ACLs,”** discusses ACL operation and guidelines using standard, extended, and named ACLs. Configuring ACLs is examined, including using wildcard masks, monitoring ACLs, and applying ACLs to interfaces. Dynamic ACLs, reflexive ACLs, and time-based ACLs are introduced.
- **Chapter 6, “Teleworker Services,”** discusses how organizations can provide secure, fast, and reliable remote network connections for teleworkers. This chapter introduces DSL, cable modem, and broadband wireless. VPNs and IPsec also are discussed.
- **Chapter 7, “IP Addressing Services,”** discusses DHCP, NAT, and IPv6. This chapter includes both the concepts and configurations needed to implement these technologies.
- **Chapter 8, “Network Troubleshooting,”** discusses documenting your network, creating a baseline, and the troubleshooting tools and methodologies used in diagnosing network issues.



- The **appendix, “Check Your Understanding and Challenge Questions Answer Key,”** provides the answers to the Check Your Understanding questions at the end of each chapter. It also includes answers for the Challenge Questions and Activities that conclude most chapters.
- The **glossary** defines all the key terms that appear throughout this book.

## About the CD-ROM

The CD-ROM included with this book provides many useful tools and information to support your education:

Packet Tracer  
□ Activity

- **Packet Tracer Activity files:** These are files to work through the Packet Tracer Activities referenced throughout the book, as indicated by the Packet Tracer Activity icon.
- **Taking Notes:** This section includes a .txt file of the chapter objectives to serve as a general outline of the key topics of which you need to take note. The practice of taking clear, consistent notes is an important skill not only for learning and studying the material but for on-the-job success as well. Also included in this section is “A Guide to Using a Networker’s Journal” PDF booklet providing important insight into the value of the practice of using a journal, how to organize a professional journal, and some best practices on what, and what not, to take note of in your journal.
- **IT Career Information:** This section includes a student guide to applying the toolkit approach to your career development. Learn more about entering the world of information technology as a career by reading two informational chapters excerpted from The IT Career Builder’s Toolkit: “The Job Search” and “The Interview.”
- **Lifelong Learning in Networking:** As you embark on a technology career, you will notice that it is ever-changing and evolving. This career path provides new and exciting opportunities to learn new technologies and their applications. Cisco Press is one of the key resources to plug into on your quest for knowledge. This section of the CD-ROM provides an orientation to the information available to you and tips on how to tap into these resources for lifelong learning.

## About the Cisco Press Website for This Book

Cisco Press may provide additional content that you can access by registering your book at the [ciscopress.com](http://www.ciscopress.com) website. Becoming a member and registering is free, and you then gain access to exclusive deals on other resources from Cisco Press.

To register this book, go to <http://www.ciscopress.com/bookstore/register.asp> and enter the book’s ISBN, located on the back cover. You’ll then be prompted to log in or to join [ciscopress.com](http://www.ciscopress.com) to continue the registration.

After you register this book, a link to the supplemental content will be listed on your My Registered Books page.

# Introduction to WANs

## Objectives

After completing this chapter, you should be able to answer the following questions:

- How does the Cisco enterprise architecture provide integrated services over an enterprise network?
- What are the key WAN technology concepts?
- What appropriate WAN technologies are used to meet different enterprise business requirements?

## Key Terms

This chapter uses the following key terms. You can find the definitions in the glossary at the end of the book.

*wide-area network (WAN)* page 3

*enterprise network* page 3

*data communications* page 3

*transactions* page 5

*voice over IP (VoIP)* page 6

*broadband* page 6

*teleworkers* page 11

*wiring closets* page 11

*backbone* page 12

*metropolitan-area network (MAN)* page 15

*Frame Relay* page 18

*Asynchronous Transfer Mode (ATM)* page 18

*High-Level Data Link Control (HDLC)* page 18

*Customer Premises Equipment (CPE)* page 19

*channel* page 19

*Data Communications Equipment (DCE)* page 19

*Data Terminal Equipment (DTE)* page 19

*local loop* page 19

*cable* page 19

*demarcation point* page 19

*central office (CO)* page 19

*communications lines* page 19

*modem* page 20

*T1* page 20

*T3* page 20

*channel service unit (CSU)* page 20

*data service unit (DSU)* page 20

*T-carrier* page 20

*access server* page 21

*X.25* page 21

*public switched telephone network (PSTN)* page 21

*Integrated Services Digital Network (ISDN)*  
page 21

*point of presence (POP)* page 21

*core router* page 21

*High-Speed Serial Interface (HSSI)* page 22

*Point-to-Point Protocol (PPP)* page 24

*circuit* page 26

*time-division multiplexing (TDM)* page 26

*circuit-switching* page 27

*packet switching* page 27

*packet-switched network* page 27

*connectionless* page 27

*connection-oriented* page 27

*Data Link Connection Identifiers (DLCI)* page 27

*virtual circuit (VC)* page 27

*permanent virtual circuit (PVC)* page 28

*switched virtual circuit (SVC)* page 28

*leased line* page 29

*telephony* page 33

*bearer (B) channels* page 33

*signaling* page 33

*delta channel* page 33

*Basic Rate Interface (BRI)* page 33

*Primary Rate Interface (PRI)* page 34

*synchronization* page 34

*E1* page 34

*J1* page 34

*call setup time* page 34

*cell* page 38

*coaxial cable* page 39

*cable television* 39

*headend* 39

*Microwave* 40

*firewall* 42

When an enterprise grows to include branch offices, e-commerce services, or global operations, a single local-area network (LAN) is no longer sufficient to meet its business requirements. *Wide-area network (WAN)* access has become essential for larger businesses today.

A variety of WAN technologies meet the different needs of businesses, and there are many ways to scale the network. Adding WAN access introduces other considerations, such as network security and address management. Consequently, designing a WAN and choosing the correct carrier network services is not a simple matter.

In this chapter, you will begin exploring some of the options available for designing enterprise WANs, the technologies available to implement them, and the terminology used to discuss them. You will learn about selecting the appropriate WAN technologies, services, and devices to meet the changing business requirements of an evolving enterprise. The activities and labs confirm and reinforce your learning.

After completing this chapter, you will be able to identify and describe the appropriate WAN technologies to enable integrated WAN services over a multilocation *enterprise network*.

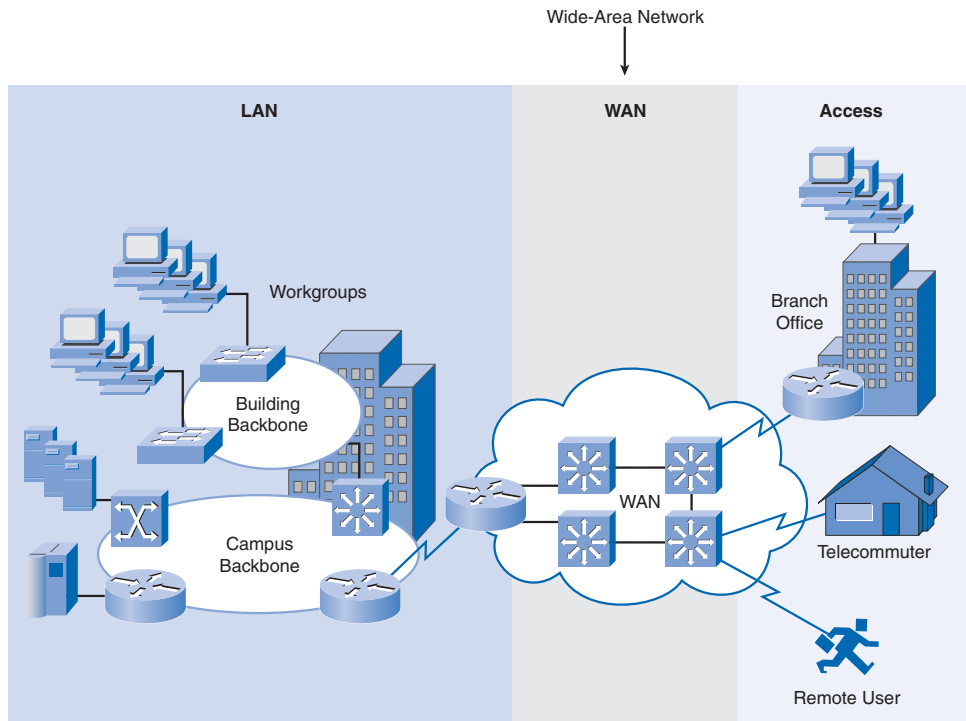
## Introducing Wide-Area Networks (WANs)

One way to categorize networks is to divide them into local-area networks (LAN) and wide-area networks (WAN). LANs typically are connected workstations, printers, and other devices within a limited geographic area such as a building. All the devices in the LAN are under the common administration of the owner of that LAN, such as a company or an educational institution. Most LANs today are Ethernet LANs.

WANs are networks that span a larger geographic area and usually require the services of a common carrier. Examples of WAN technologies and protocols include Frame Relay, ATM, and DSL.

### What Is a WAN?

A WAN is a *data communications* network that operates beyond the geographic scope of a LAN. Figure 1-1 shows the relative location of a LAN and WAN.

**Figure 1-1** WAN Location

WANs differ from LANs in several ways. Whereas a LAN connects computers, peripherals, and other devices in a single building or other small geographic area, a WAN allows the transmission of data across greater geographic distances. In addition, an enterprise must subscribe to a WAN service provider to use WAN carrier network services. LANs typically are owned by the company or organization that uses them.

WANs use facilities provided by a service provider, or carrier, such as a telephone or cable company, to connect the locations of an organization to each other, to locations of other organizations, to external services, and to remote users. WANs provide network capabilities to support a variety of mission-critical traffic such as voice, video, and data.

Here are the three major characteristics of WANs:

- WANs generally connect devices that are separated by a broader geographic area than can be served by a LAN.
- WANs use the services of carriers, such as telephone companies, cable companies, satellite systems, and network providers.
- WANs use serial connections of various types to provide access to bandwidth over large geographic areas.

## Why Are WANs Necessary?

LAN technologies provide both speed and cost efficiency for the transmission of data in organizations over relatively small geographic areas. However, other business needs require communication among remote sites, including the following:

- People in the regional or branch offices of an organization need to be able to communicate and share resources with the central site.
- Organizations often want to share information with other organizations across large distances. For example, software manufacturers routinely communicate product and promotion information to distributors that sell their products to end users.
- Employees who frequently travel on company business need to access information that resides on their corporate networks.

In addition, home computer users need to send and receive data across increasingly larger distances. Here are some examples:

- It is now common in many households for consumers to communicate with banks, stores, and a variety of providers of goods and services via computers.
- Students do research for classes by accessing library catalogs and publications located in other parts of their country and in other parts of the world.

Because it is obviously not feasible to connect computers across a country or around the world in the same way that they are connected in a LAN with cables, different technologies have evolved to support this need. The Internet has become and continues to be an inexpensive alternative for WAN connectivity. New technologies are available to businesses to provide security and privacy for their Internet communications and *transactions*. WANs used by themselves, or in concert with the Internet, allow organizations and individuals to meet their wide-area communication needs.

## The Evolving Enterprise

As companies grow, they hire more employees, open branch offices, and expand into global markets. These changes also influence companies' requirements for integrated services and drive their network requirements. This section explores how company networks evolve to accommodate companies' changing business requirements.

## Businesses and Their Networks

Every business is unique. How an organization grows depends on many factors, such as the type of products or services the business sells, the owners' management philosophy, and the economic climate of the country in which the business operates.

In slow economic times, many businesses focus on increasing their profitability by improving the efficiency of the existing operations, increasing employee productivity, and lowering operating costs. Establishing and managing networks can represent significant installation and operating expenses. To justify such a large expense, companies expect their networks to perform optimally and to be able to deliver an ever-increasing array of services and applications to support productivity and profitability.

To illustrate, we'll use a fictitious company called Span Engineering as an example. You'll watch how its network requirements change as the company grows from a small local business into a global enterprise.

## Small Office (Single LAN)

Span Engineering, an environmental consulting firm, has developed a special process for converting household waste into electricity. It is developing a small pilot project for a municipal government in its local area. The company, which has been in business for four years, has grown to include 15 employees: six engineers, four computer-aided drawing (CAD) designers, two senior partners, a receptionist, and two office assistants.

Span Engineering's management is hoping that the company will have full-scale projects after the pilot project successfully demonstrates the feasibility of its process. Until then, the company must manage its costs carefully.

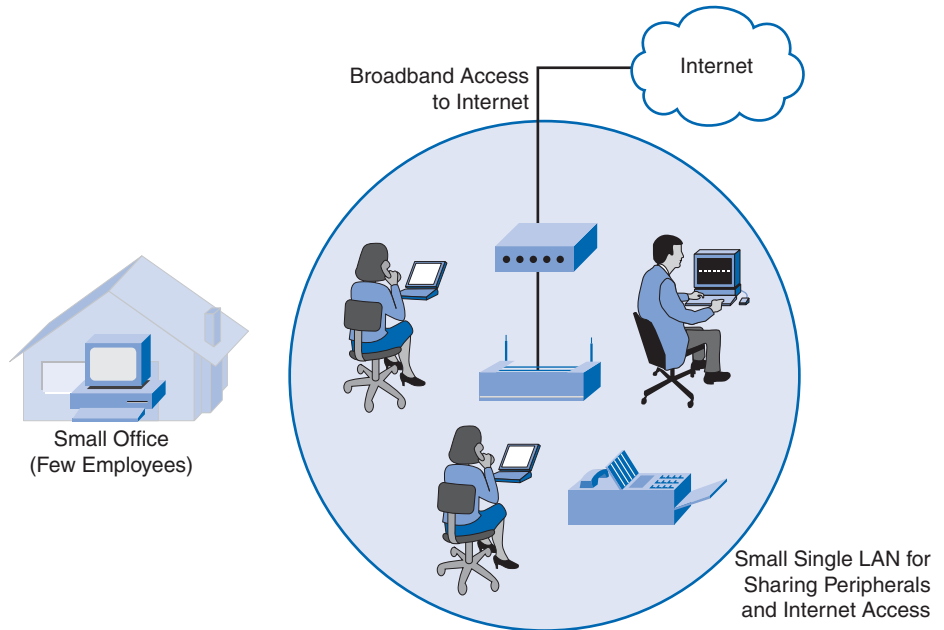
For its small office, shown in Figure 1-2, Span Engineering uses a single LAN to share information between computers and to share peripherals, such as a printer, a large-scale plotter (to print engineering drawings), and fax equipment. The company recently upgraded its LAN to provide inexpensive *voice over IP (VoIP)* service to save on the costs of separate phone lines for its employees.

The company connects to the Internet through a common *broadband* service called Digital Subscriber Line (DSL), which is supplied by the local telephone service provider. With so few employees, bandwidth is not a significant problem.

The company cannot afford in-house information technology (IT) support staff, so it uses support services purchased from the same service provider. The company also uses a hosting service rather than purchasing and operating its own FTP and e-mail servers.

## Campus (Multiple LANs)

Five years later, Span Engineering has grown rapidly. As the owners had hoped, the company was contracted to design and implement a full-sized waste conversion facility soon after the successful implementation of their first pilot plant. Since then, other projects have also been won in neighboring municipalities and in other parts of the country.

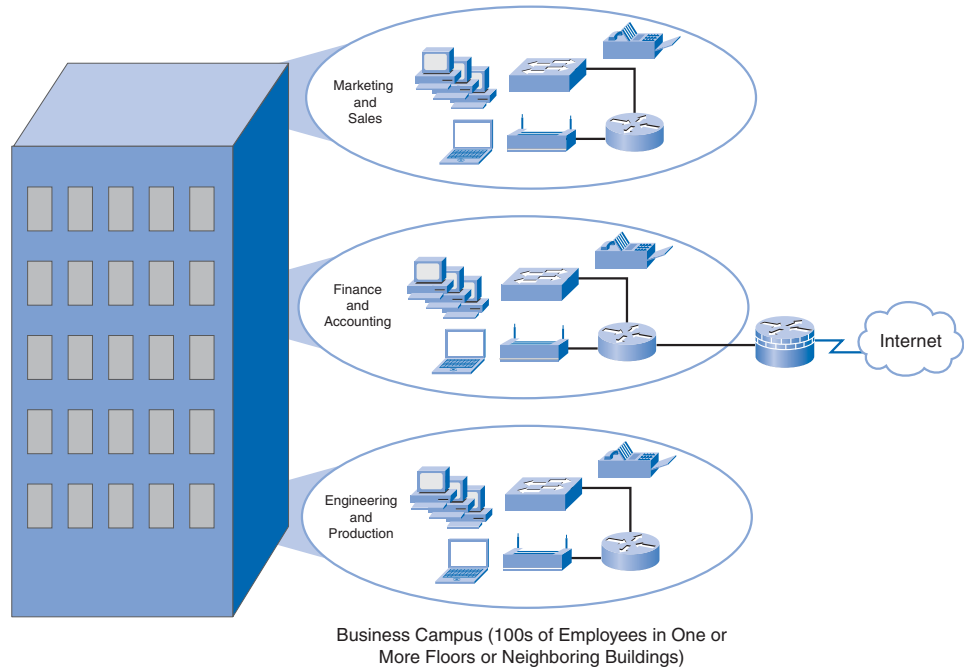
**Figure 1-2** Small-Office LAN

To handle the additional workload, the business has hired more staff and leased more office space. It is now a small to medium-sized business with several hundred employees. Many projects are being developed at the same time, and each requires a project manager and support staff. The company has organized itself into functional departments, with each department having its own organizational team. To meet its growing needs, the company has moved into several floors of a larger office building.

As the business has expanded, the network has also grown. Instead of a single small LAN, the network now consists of several subnetworks, each devoted to a different department. For example, all the engineering staff are on one LAN, and the marketing staff is on another LAN. These multiple LANs are joined to create a company-wide network, or campus, which spans several floors of the building. Figure 1-3 shows Span Engineering's expanded campus LAN.

The business now has in-house IT staff to support and maintain the network. The network includes servers for e-mail, data transfer and file storage, web-based productivity tools, and applications. The network includes a company intranet to provide in-house documents and information to employees. In addition, the company has an extranet that provides project information only to designated customers.



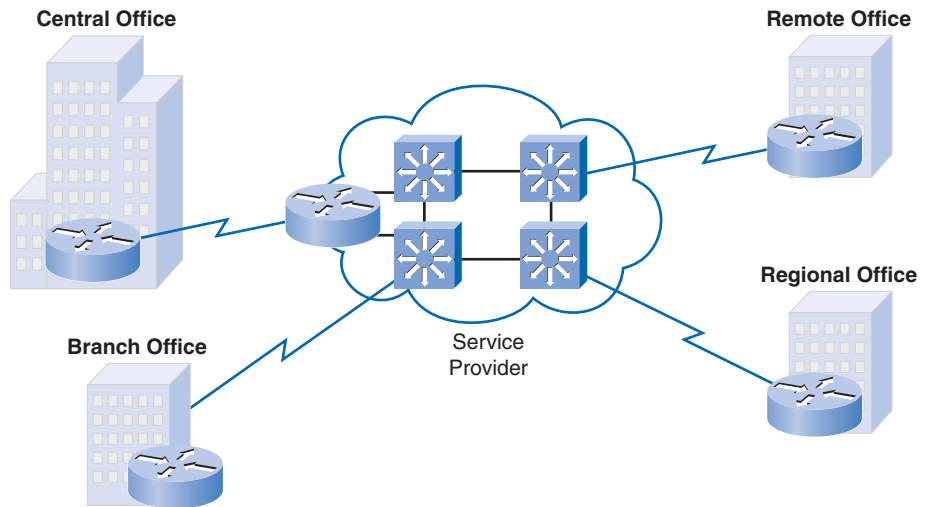
**Figure 1-3** Campus (Multiple LANs)

## Branch (WAN)

Another five years later, Span Engineering has been so successful with its patented process that demand for its services has skyrocketed. New projects are now being built in other cities. To manage those projects, the company has opened small branch offices closer to the project sites.

This situation presents new challenges to the IT team. To manage the delivery of information and services throughout the company, Span Engineering now has a data center, which houses the company's various databases and servers. To ensure that all parts of the business can access the same services and applications regardless of where the offices are located, the company now needs to implement a WAN.

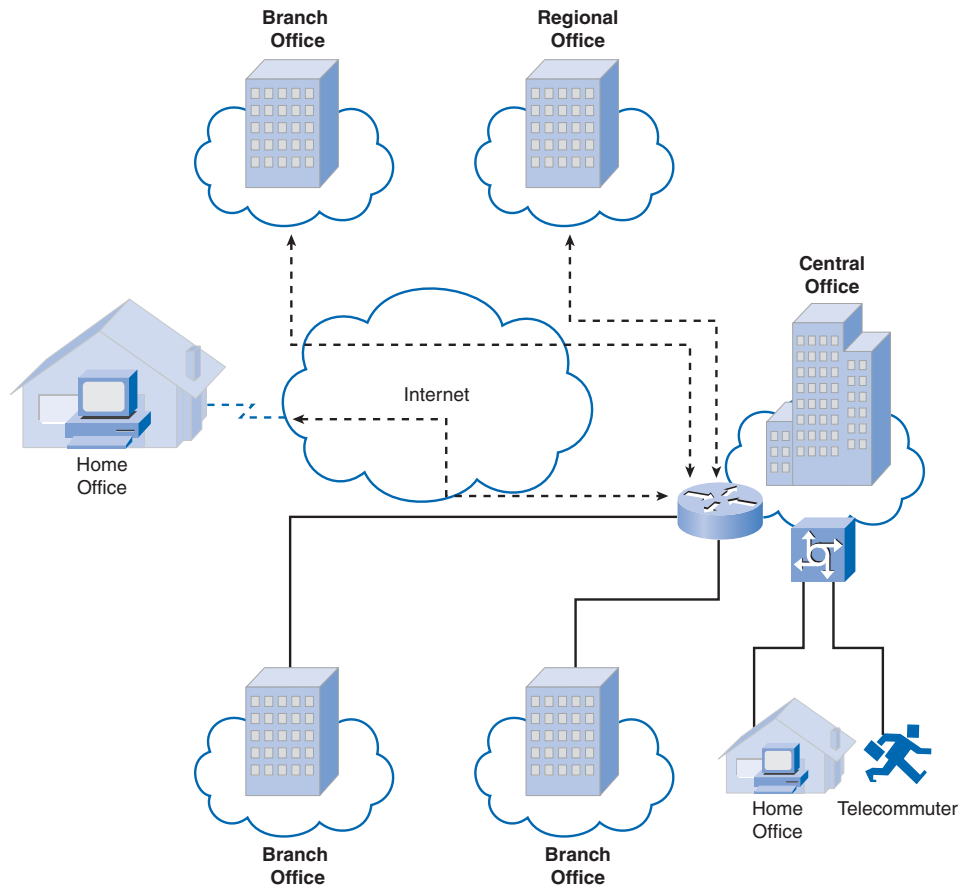
For its branch and regional offices that are in nearby cities, the company decides to use private dedicated lines through its local service provider, as shown in Figure 1-4. However, for the offices that are located in other countries, the Internet is now an attractive WAN connection option. Although connecting offices through the Internet is economical, it introduces security and privacy issues that the IT team must address.

**Figure 1-4** Branch (WAN)

## Distributed (Global)

Span Engineering has now been in business for 20 years and has grown to thousands of employees distributed in offices worldwide. The cost of the network and its related services is a significant expense. The company is looking to provide its employees with the best network services at the lowest cost. Optimized network services would allow each employee to work at high efficiency.

To increase profitability, Span Engineering needs to reduce its operating expenses. It has relocated some of its office facilities to less expensive areas. The company is also encouraging teleworking and virtual teams. Web-based applications—including web conferencing, e-learning, and online collaboration tools—are being used to increase productivity and reduce costs. Site-to-site and remote-access Virtual Private Networks (VPN) enable the company to use the Internet to connect easily and securely with employees and facilities around the world. To meet these requirements, the network must provide the necessary converged services and secure Internet WAN connectivity to remote offices and individuals. Figure 1-5 shows SPAN Engineering's new distributed or global network.

**Figure 1-5** Distributed (Global)

As you can see from this example, a company's network requirements can change dramatically as the company grows over time. Distributing employees saves costs in many ways, but it puts increased demands on the network. Not only must a network meet the business's day-to-day operational needs, but it also needs to be able to adapt and grow as the company changes. Network designers and administrators meet these challenges by carefully choosing network technologies, protocols, and service providers, and by optimizing their networks using many of the techniques we teach in this series of courses. The next sections describe a model for designing networks that can accommodate the changing needs of today's evolving businesses.

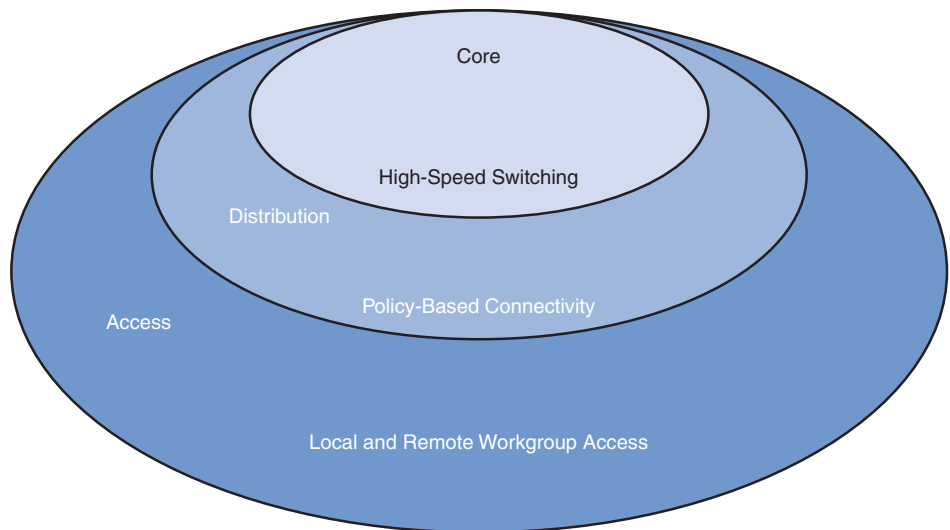
## The Evolving Network Model

The hierarchical network model is a framework that helps you visualize and design networks. Several variations of this model exist, and it can be adapted for specific implementations.

### The Hierarchical Design Model

Figure 1-6 shows the hierarchical network model, which is a useful high-level tool for designing a reliable network infrastructure. It provides a modular view of a network, making it easier to design and build a scalable network. The figure conceptually displays the model and identifies its major responsibilities.

**Figure 1-6** Hierarchical Network Model



### The Hierarchical Network Model

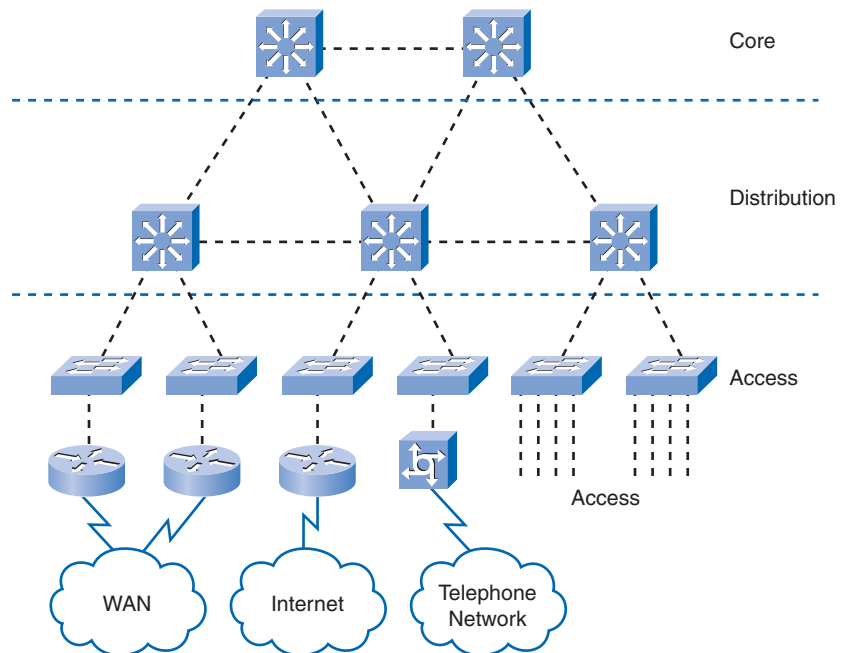
As you may recall from *CCNA Exploration: LAN Switching and Wireless*, the hierarchical network model divides a network into three layers:

- The access layer grants user access to network devices. In a network campus, the access layer generally incorporates switched LAN devices with ports that provide connectivity to workstations and servers. In the WAN environment, it may give *teleworkers* or remote sites access to the corporate network across WAN technology.
- The distribution layer aggregates the *wiring closets*, using switches to segment workgroups and isolate network problems in a campus environment. Similarly, the distribution layer aggregates WAN connections at the edge of the campus and provides policy-based connectivity.

- The core layer (also called the backbone) is a high-speed *backbone* that is designed to switch packets as fast as possible. Because the core is critical for connectivity, it must provide a high level of availability and adapt to changes very quickly. It also provides scalability and fast convergence.

Figure 1-7 represents the Hierarchical Network Model in campus environments. The Hierarchical Network Model provides a modular framework that allows flexibility in network design and facilitates ease of implementation and troubleshooting in the infrastructure. However, it is important to understand that the network infrastructure is only the foundation of a comprehensive architecture.

**Figure 1-7** Hierarchical Network Model in Campus Environments



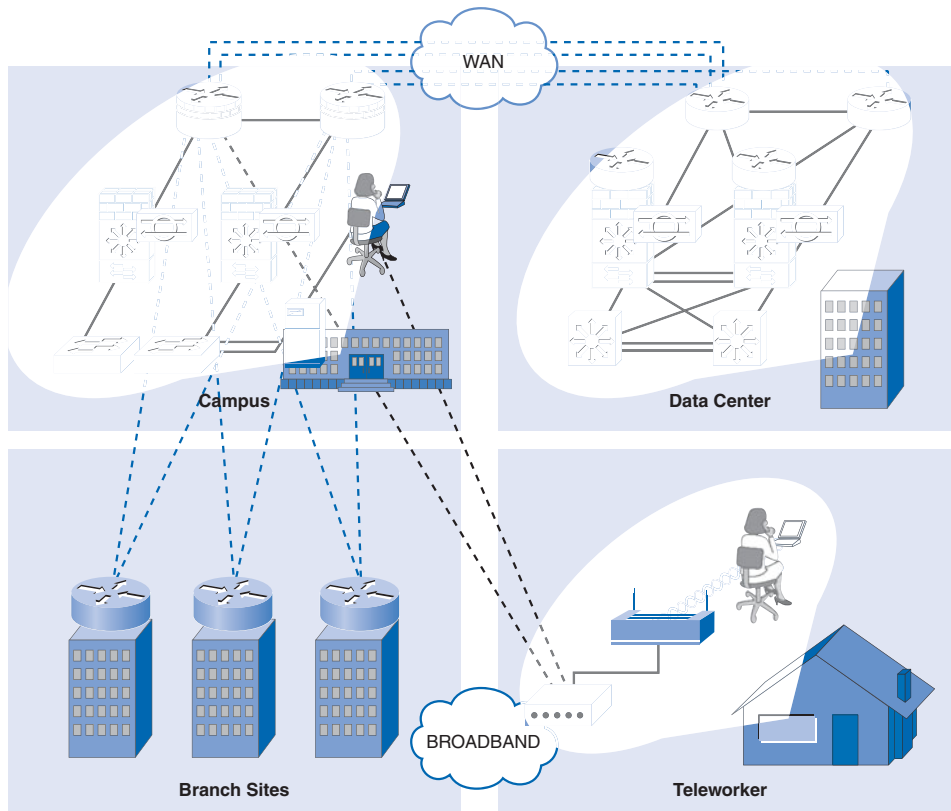
Networking technologies have advanced considerably in recent years, resulting in networks that are increasingly intelligent. The current network elements are more aware of traffic characteristics and can be configured to deliver specialized services based on such things as the types of data they carry, the data's priority, and even the security needs. Although most of these various infrastructure services are outside the scope of this course, it is important to understand that they influence network design. The next sections explore the Cisco Enterprise Architecture, which expands on the hierarchical model by making use of network intelligence to address the network infrastructure.

## The Enterprise Architecture

As described earlier, different businesses need different types of networks, depending on how the business is organized and its business goals. Unfortunately, all too often networks grow in a haphazard way as new components are added in response to immediate needs. Over time, those networks become complex and expensive to manage. Because the network is a mixture of newer and older technologies, it can be difficult to support and maintain. Outages and poor performance are a constant source of trouble for network administrators.

To help prevent this situation, Cisco has developed a recommended architecture called the Cisco Enterprise Architecture. It has relevance to the different stages of a business's growth, as shown in Figure 1-8. This architecture is designed to give network planners a road map for network growth as the business moves through different stages. By following the suggested road map, IT managers can plan for future network upgrades that will integrate seamlessly into the existing network and support the ever-growing need for services.

**Figure 1-8** Cisco Enterprise Architecture

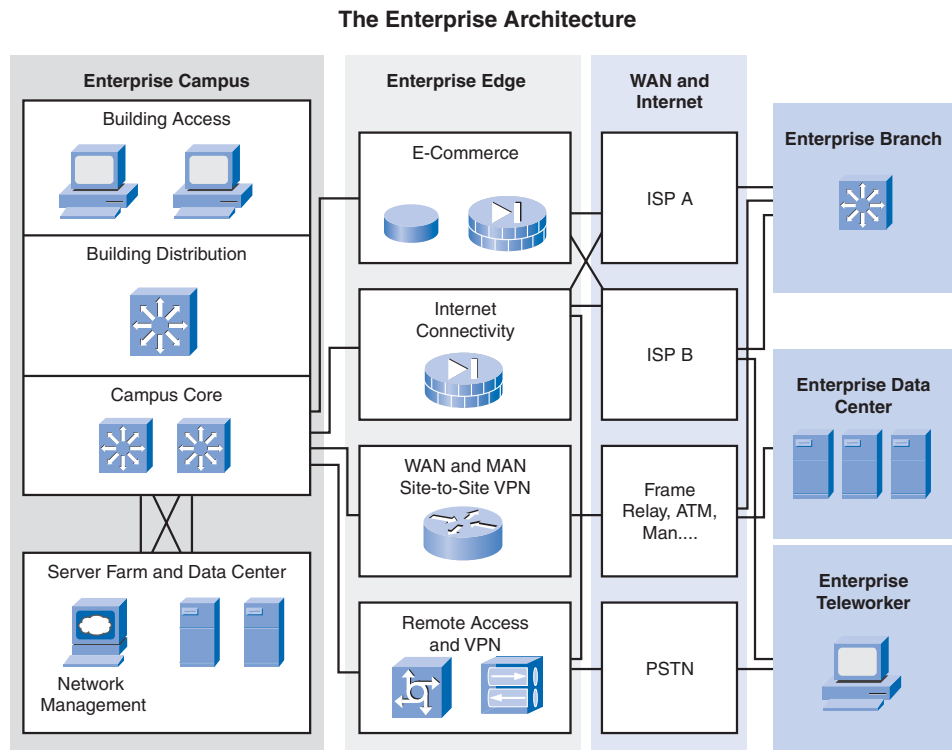


The Cisco Enterprise Architecture consists of modules representing focused views that target each place in the network. Each module has a distinct network infrastructure with services and network applications that extend across the modules. The following are some of the modules within the architecture that are relevant to the Span Engineering scenario described earlier:

- Enterprise Campus Architecture
- Enterprise Branch Architecture
- Enterprise Data Center Architecture
- Enterprise Teleworker Architecture

Figure 1-9 shows the Cisco Enterprise Architecture, which consists of modules representing focused views that target each place in the network. Each module has a distinct network infrastructure with services and network applications that extend across the modules.

**Figure 1-9** Modules of the Enterprise Architecture



The Cisco Enterprise Architecture includes the following modules, each of which is described in greater detail in the following sections:

- Enterprise Campus Architecture

- Enterprise Edge Architecture
- Enterprise Branch Architecture
- Enterprise Data Center Architecture
- Enterprise Teleworker Architecture

## Enterprise Campus Architecture

A campus network is a building or group of buildings connected into one enterprise network that consists of many LANs. A campus generally is limited to a fixed geographic area, but it can span several neighboring buildings, such as an industrial complex or business park environment. In the Span Engineering example, the campus spans multiple floors of the same building.

The Enterprise Campus Architecture describes the recommended methods to create a scalable network while addressing the needs of campus-style business operations. The architecture is modular and can easily expand to include additional campus buildings or floors as the enterprise grows. The Enterprise Campus Architecture, as illustrated in Figure 1-9, is composed of four submodules:

- The building access contains end-user workstations, IP phones, and Layer 2 access switches that connect devices to the building distribution submodule.
- The building distribution provides aggregation of building access devices, often using Layer 3 switching. This submodule performs routing, quality control, and access control.
- The campus core provides redundant and fast-converging connectivity between buildings and the server farm and enterprise edge.
- The server farm contains e-mail and corporate servers providing application, file, print, e-mail, and Domain Name System (DNS) services to internal users.

The enterprise campus module describes the connections between users, the campus network, the server farm, and the Enterprise Edge modules.

## Enterprise Edge Architecture

This module, as illustrated in Figure 1-9, often functions as a liaison between the campus module and the other modules in the Enterprise Architecture. It offers connectivity to voice, video, and data services outside the enterprise. It enables the enterprise to use Internet and partner resources and provide resources for its customers. The Enterprise WAN and *metropolitan-area network (MAN)* Architecture, which the technologies covered later in this course are relevant to, are considered part of this module.



The enterprise edge aggregates the connectivity from the various functional areas at the enterprise edge (e-commerce, Internet connectivity, and VPNs) and routes the traffic into the campus core submodule.

## Enterprise Branch Architecture

This module, as illustrated in Figure 1-9, allows businesses to extend the applications and services found at the campus to thousands of remote locations and users or to a small group of branches. Much of this course focuses on the technologies that are often implemented in this module.

## Enterprise Data Center Architecture

Data centers provide management for many data systems that are vital to modern business operations. Employees, partners, and customers rely on data and resources in the data center to effectively create, collaborate, and interact. Over the last decade, the rise of Internet and web-based technologies has made the data center more important than ever, improving productivity, enhancing business processes, and accelerating change.

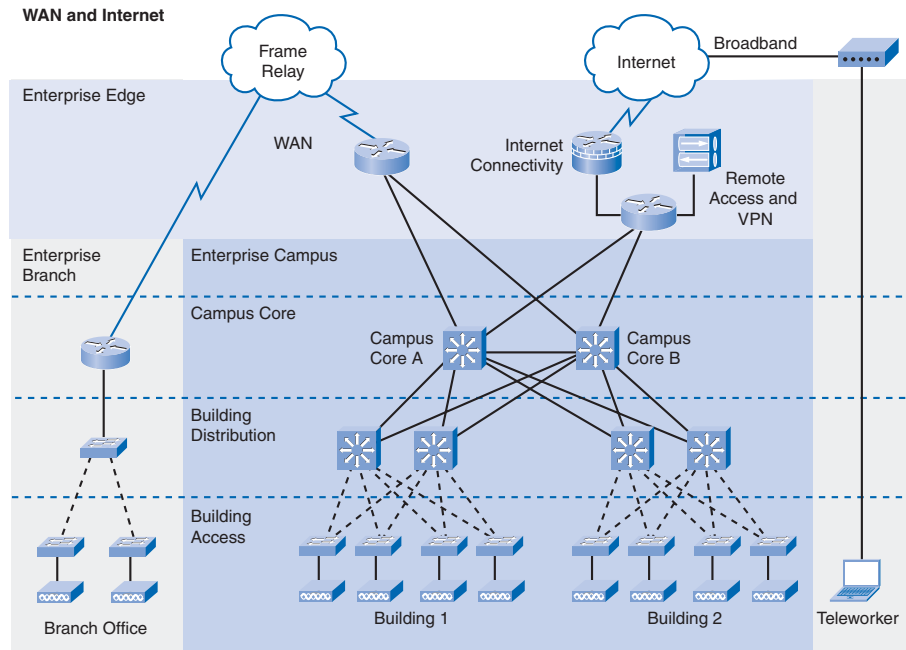
The enterprise data center, as illustrated in Figure 1-9, manages and maintains centralized data systems for the entire enterprise.

## Enterprise Teleworker Architecture

Many businesses today offer a flexible work environment to their employees, allowing them to telecommute from home offices. To telecommute is to leverage the network resources of the enterprise from home. The teleworker module, as illustrated in Figure 1-9, recommends that connections from home using broadband services such as cable modem or DSL connect to the Internet and from there to the corporate network. Because the Internet introduces significant security risks to businesses, special measures need to be taken to ensure that teleworker communications are secure and private.

The enterprise teleworker module connects individual employees to network resources remotely, typically from their homes.

Figure 1-10 shows how all the Enterprise Architecture modules can be used to build a business network topology.

**Figure 1-10** Sample Enterprise Architecture Topology

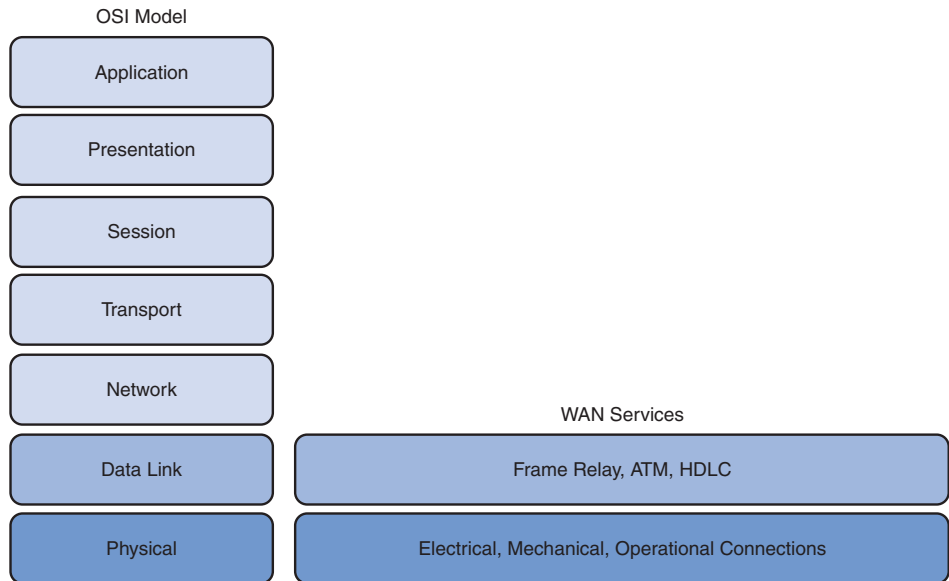
## WAN Technology Concepts

This section discusses the physical and data link layer concepts of wide-area networks, including an introduction to some of the standards and protocols.

## WAN Technology Overview

A variety of protocols and technologies are used in wide-area networks. Some of these services, such as HDLC and Frame Relay, are explained in more detail later in this book.

As described in relation to the OSI reference model, WAN operations focus primarily on Layer 1 and Layer 2, as shown in Figure 1-11. WAN access standards typically describe both physical layer delivery methods and data link layer requirements, including physical addressing, flow control, and encapsulation. WAN access standards are defined and managed by a number of recognized authorities, including the International Organization for Standardization (ISO), the Telecommunication Industry Association (TIA), and the Electronic Industries Alliance (EIA).

**Figure 1-11** OSI and WAN Services

As highlighted in Figure 1-11, the physical layer (OSI Layer 1) protocols describe how to provide electrical, mechanical, operational, and functional connections to the services of a communications service provider.

The data link layer (OSI Layer 2) protocols define how data is encapsulated for transmission toward a remote location and the mechanisms for transferring the resulting frames. A variety of technologies are used, such as *Frame Relay* and *Asynchronous Transfer Mode (ATM)*. Some of these protocols use the same basic framing mechanism, *High-Level Data Link Control (HDLC)*, an ISO standard, or one of its subsets or variants.

## WAN Physical Layer Concepts

The WAN physical layer includes several devices and terms specific to wide-area networks, as described in the following sections.

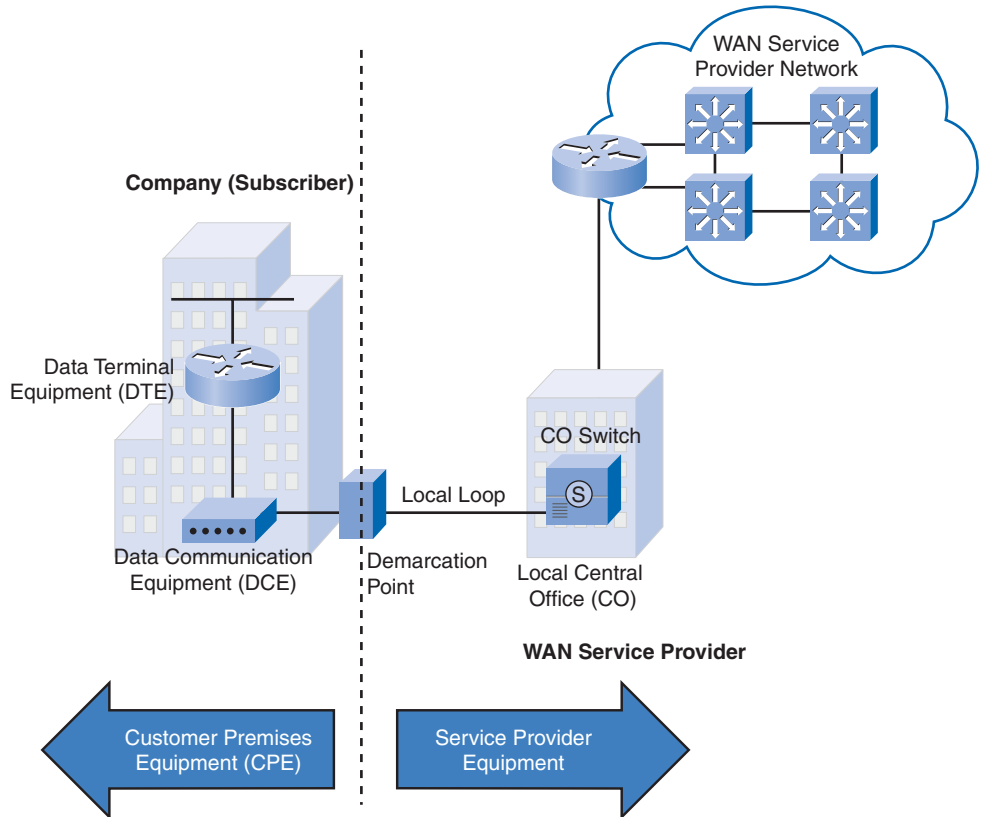
### WAN Physical Layer Terminology

One primary difference between a WAN and a LAN is that for a company or organization to use WAN carrier network services, it must subscribe to an outside WAN service provider. A WAN uses data links provided by carrier services to access or connect the locations of an

organization to each other, to locations of other organizations, to external services, and to remote users. The WAN access physical layer describes the physical connection between the company network and the service provider network.

Figure 1-12 illustrates the terminology commonly used to describe physical WAN connections, as described in further detail in the following list:

- **Customer Premises Equipment (CPE):** The devices and inside wiring located at the premises of the subscriber, connected with a telecommunication *channel* of a carrier. The subscriber either owns or leases the CPE. A subscriber, in this context, is a company that arranges for WAN services from a service provider or carrier.
- **Data Communications Equipment (DCE):** Also called data circuit-terminating equipment, the DCE consists of devices that put data on the local loop. The DCE primarily provides an interface to connect subscribers to a communication link on the WAN cloud.
- **Data Terminal Equipment (DTE):** The customer devices that pass the data from a customer network or host computer for transmission over the WAN. The DTE connects to the local loop through the DCE.
- **Local loop:** The copper or fiber *cable* that connects the CPE at the subscriber site to the central office (CO) of the service provider. The local loop is sometimes called the “last mile.”
- **Demarcation point:** A point established in a building or complex to separate customer equipment from service provider equipment. Physically, the demarcation point is the cabling junction box, located on the customer premises, that connects the CPE wiring to the local loop. It is usually placed for easy access by a technician. The demarcation point is the place where the responsibility for the connection changes from the user to the service provider. This is very important, because when problems arise, it is necessary to determine whether the user or the service provider is responsible for troubleshooting or repair.
- **Central office (CO):** A local service provider facility or building where local cables link to long-haul, all-digital, fiber-optic *communications lines* through a system of switches and other equipment.

**Figure 1-12** WAN Physical Layer Terminology

## WAN Devices

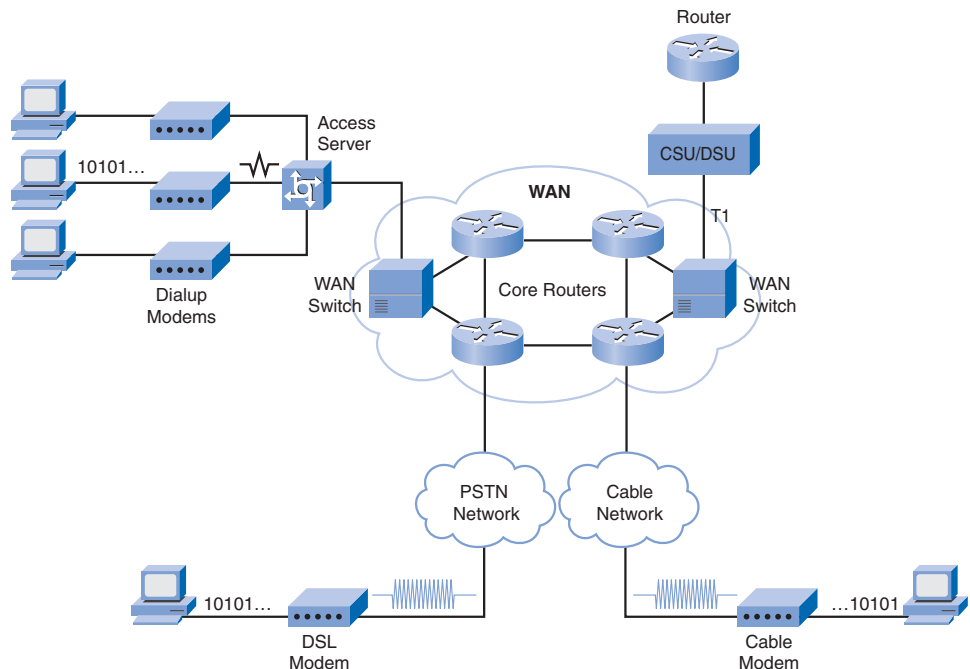
WANs use numerous types of devices that are specific to WAN environments:

- Modem:** Modulates an analog carrier signal to encode digital information, and also demodulates the carrier signal to decode the transmitted information. A voiceband modem converts the digital signals produced by a computer into voice frequencies that can be transmitted over the analog lines of the public telephone network. On the other side of the connection, another modem converts the sounds back into a digital signal for input to a computer or network connection. Faster modems, such as cable modems and DSL modems, transmit using higher broadband frequencies.
- CSU/DSU:** Digital lines, such as *T1* and *T3* carrier lines, require a **channel service unit (CSU)** and a **data service unit (DSU)**. The two are often combined into a single piece of equipment, called the CSU/DSU. The CSU provides termination for the digital signal and ensures connection integrity through error correction and line monitoring. The DSU converts the *T-carrier* line frames into frames that the LAN can interpret and vice versa.

- **Access server:** Concentrates dial-in and dial-out user communications. An access server may have a mixture of analog and digital interfaces and support hundreds of simultaneous users.
- **WAN switch:** A multiport internetworking device used in carrier networks. These devices typically switch traffic such as Frame Relay, ATM, or *X.25* and operate at the data link layer of the OSI reference model. *Public switched telephone network (PSTN)* switches may also be used within the cloud for circuit-switched connections such as *Integrated Services Digital Network (ISDN)* or analog dialup.
- **Router:** Provides internetworking and WAN access interface ports that are used to connect to the service provider network. These interfaces may be serial connections or other WAN interfaces. With some types of WAN interfaces, an external device such as a DSU/CSU or modem (analog, cable, or DSL) is required to connect the router to the service provider's local *point of presence (POP)*.
- **Core router:** A router that resides within the middle or backbone of the WAN rather than at its periphery. To fulfill this role, a router must be able to support multiple telecommunications interfaces of the highest speed in use in the WAN core, and it must be able to forward IP packets at full speed on all those interfaces. The router must also support the routing protocols being used in the core.

Figure 1-13 shows the location of each device.

**Figure 1-13** WAN Devices



## WAN Physical Layer Standards

WAN physical-layer protocols describe how to provide electrical, mechanical, operational, and functional connections for WAN services. The WAN physical layer also describes the interface between the DTE and DCE.

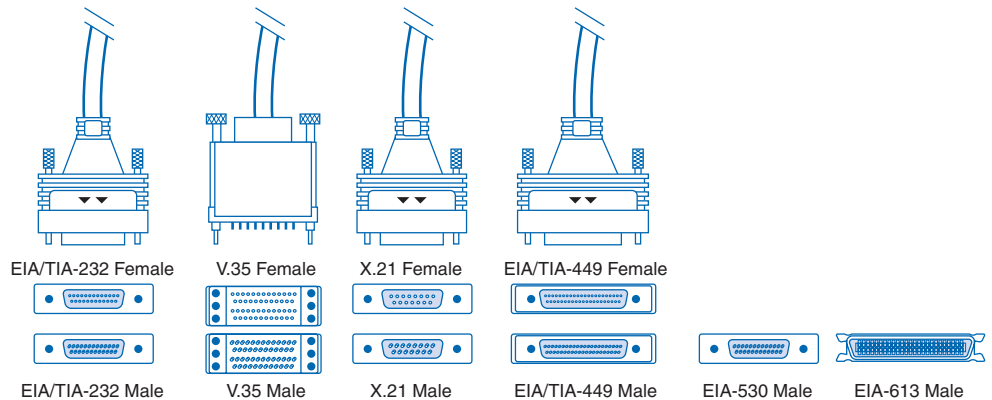
The DTE/DCE interface uses various physical layer protocols:

- **EIA/TIA-232:** This protocol allows signal speeds of up to 64 kbps on a 25-pin D-connector over short distances. It was formerly known as RS-232. The ITU-T V.24 specification is effectively the same.
- **EIA/TIA-449/530:** This protocol is a faster (up to 2 Mbps) version of EIA/TIA-232. It uses a 36-pin D-connector and is capable of longer cable runs. Several versions exist. This standard is also known as RS-422 and RS-423.
- **EIA/TIA-612/613:** This standard describes the *High-Speed Serial Interface (HSSI)* protocol, which provides access to services up to 52 Mbps on a 60-pin D-connector.
- **V.35:** This is the ITU-T standard for synchronous communications between a network access device and a packet network. Originally specified to support data rates of 48 kbps, it now supports speeds of up to 2.048 Mbps using a 34-pin rectangular connector.
- **X.21:** This protocol is an ITU-T standard for synchronous digital communications. It uses a 15-pin D-connector.

These protocols establish the codes and electrical parameters the devices use to communicate with each other. Choosing a protocol is largely determined by the service provider's method of facilitation.

Figure 1-14 illustrates the types of cable connectors associated with each physical layer protocol.

**Figure 1-14** WAN Cable Connectors



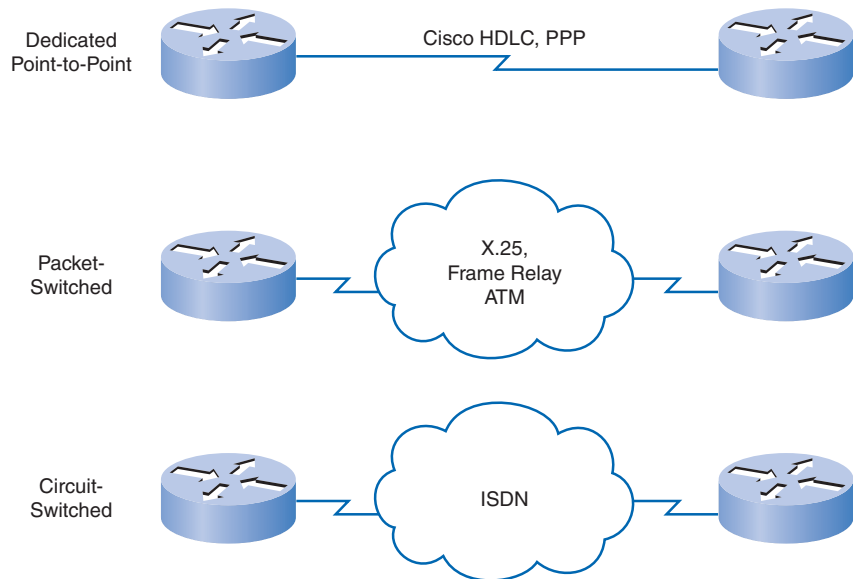
## WAN Data Link Layer Concepts

In addition to physical layer devices, WANs require data link layer protocols to establish the link across the communication line from the sending to the receiving device. This section describes the common data link protocols that are used in today's enterprise networks to implement WAN connections.

### Data Link Protocols

Data link layer protocols define how data is encapsulated for transmission to remote sites and the mechanisms for transferring the resulting frames. A variety of technologies are used, such as ISDN, Frame Relay, or ATM, as shown in Figure 1-15. Many of these protocols use the same basic framing mechanism, HDLC, an ISO standard, or one of its subsets or variants. ATM is different from the others, because it uses small fixed-size cells of 53 bytes (48 bytes for data), unlike the other packet-switched technologies, which use variable-sized packets.

**Figure 1-15** Data Link Layer Protocols



Protocol	Usage
Link Access Procedure Balanced (LAPB)	X.25
Link Access Procedure D Channel (LAPD)	ISDN D Channel
Link Access Procedure Frame (LAPF)	Frame Relay
High-Level Data Link Control (HDLC)	Cisco Default
Point-to-Point Protocol (PPP)	Serial WAN Switched Connections



The most common WAN data-link protocols are as follows:

- HDLC
- *Point-to-Point Protocol (PPP)*
- Frame Relay
- ATM

ISDN and X.25 are older data-link protocols that are less frequently used today. However, ISDN is still covered in this course because of its use when provisioning a VoIP network using PRI links. X.25 is mentioned to help explain the relevance of Frame Relay. As well, X.25 is still in use in developing countries where packet data networks (PDN) are used to transmit credit card and debit card transactions from retailers.

#### Note

Another data link layer protocol is Multiprotocol Label Switching (MPLS). MPLS is increasingly being deployed by service providers as an economical solution to carry circuit-switched as well as packet-switched network traffic. It can operate over any existing infrastructure, such as IP, Frame Relay, ATM, or Ethernet. It sits between Layer 2 and Layer 3 and is sometimes referred to as a Layer 2.5 protocol. MPLS is beyond the scope of this course, but it is covered on the CCNP: Implementing Secure Converged Wide Area Networks course.

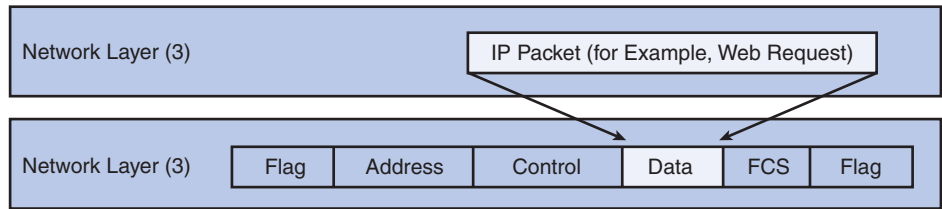
---

## WAN Encapsulation

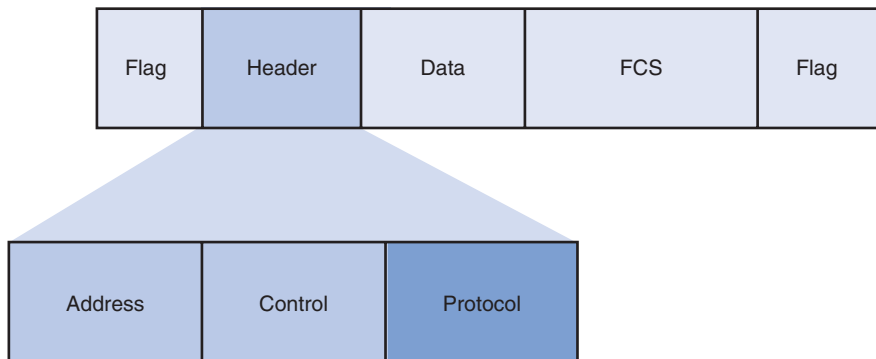
Data from the network layer is passed to the data link layer for delivery on a physical link, which normally is point-to-point on a WAN connection. The data link layer builds a frame around the network layer data so that the necessary checks and controls can be applied. Each WAN connection type uses a Layer 2 protocol to encapsulate a packet while it is crossing the WAN link. To ensure that the correct encapsulation protocol is used, the Layer 2 encapsulation type used for each router serial interface must be configured. The choice of encapsulation protocols depends on the WAN technology and the equipment. HDLC was first proposed in 1979; for this reason, most framing protocols that were developed afterwards are based on it.

Figure 1-16 shows how WAN data link protocols encapsulate traffic.

Examining the header portion of an HDLC frame, shown in Figure 1-17, helps you identify common fields used by many WAN encapsulation protocols. The frame always starts and ends with an 8-bit Flag field. The bit pattern is 01111110. The Address field is not needed for WAN links, which are almost always point-to-point. The Address field is still present and may be 1 or 2 bytes long. The Control field is protocol-dependent, but it usually indicates whether the data is control information or network layer data. The Control field normally is 1 byte.

**Figure 1-16** WAN Encapsulation

Network data is encapsulated in an HDLC frame.

**Figure 1-17** WAN Frame Encapsulation Formats

A WAN header address field is usually a broadcast address on a point-to-point link. The control field identifies the data portion as either information or control. The protocol field identifies the intended layer 3 protocol (e.g., IP, IPX).

The Address and Control fields, as illustrated in Figure 1-17, are called the frame header. The encapsulated data follows the Control field. Then a frame check sequence (FCS) uses the cyclic redundancy check (CRC) mechanism to establish a 2- or 4-byte field.

Several types of WAN encapsulation formats exist, including subsets and proprietary versions of HDLC. Both PPP and the Cisco version of HDLC have an extra field in the header to identify the network layer protocol of the encapsulated data.

## WAN Switching Concepts

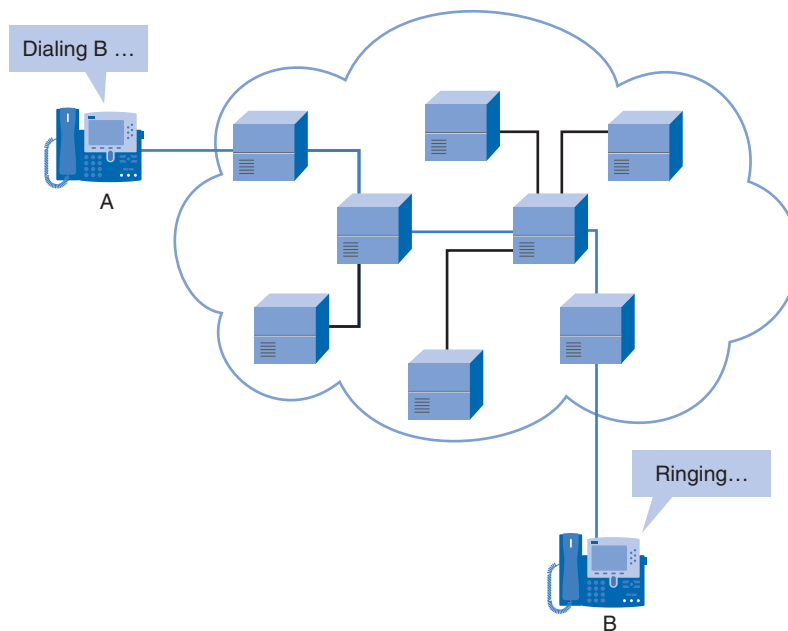
WAN switched networks are categorized as either circuit-switched or packet-switched, as described in greater detail in the following sections.

### Circuit Switching

A circuit-switched network is one that establishes a dedicated *circuit* (or channel) between nodes and terminals before the users may communicate.

As an example, Figure 1-18 shows that when a subscriber makes a telephone call, the dialed number is used to set switches in the exchanges along the call's route so that a continuous circuit exists from the caller to the called party. Because of the switching operation used to establish the circuit, the telephone system is called a circuit-switched network. If the telephones are replaced with modems, the switched circuit can carry computer data.

**Figure 1-18** Circuit Switching



The internal path taken by the circuit between exchanges is shared by a number of conversations. *Time-division multiplexing (TDM)* gives each conversation a share of the connection in turn. TDM ensures that a fixed-capacity connection is made available to the subscriber.

If the circuit carries computer data, the usage of this fixed capacity may be inefficient. For example, if the circuit is used to access the Internet, a burst of activity occurs on the circuit while a web page is transferred. This could be followed by no activity while the user reads the page, and then another burst of activity while the next page is transferred. This variation in usage between none and maximum is typical of computer network traffic. Because the subscriber has sole use of the fixed-capacity allocation, switched circuits generally are an expensive way of moving data.

PSTN and ISDN are two types of *circuit-switching* technology that may be used to implement a WAN in an enterprise setting.

## Packet Switching

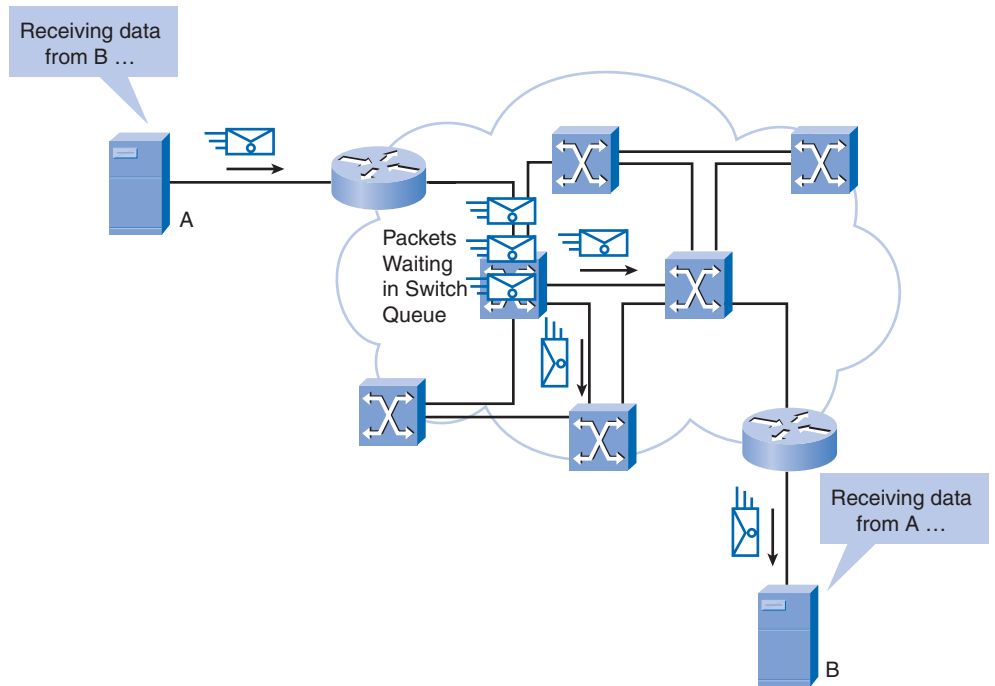
In contrast to circuit switching, *packet switching* splits traffic data into packets that are routed over a shared network. Packet-switching networks do not require a circuit to be established, and they allow many pairs of nodes to communicate over the same channel.

The switches in a *packet-switched network* determine which link the packet must be sent on next from the addressing information in each packet. There are two approaches to this link determination:

- *Connectionless* systems, such as the Internet, carry full addressing information in each packet. Each switch must evaluate the address to determine where to send the packet.
- *Connection-oriented* systems predetermine a packet's route, and each packet only has to carry an identifier. In the case of Frame Relay, these are called *Data Link Connection Identifiers (DLCI)*. The switch determines the onward route by looking up the identifier in tables held in memory. The set of entries in the tables identifies a particular route or circuit through the system. If this circuit exists only while a packet travels through it, it is called a *virtual circuit (VC)*. A virtual circuit is a logical circuit between two network devices to help ensure reliable communications.

Because the internal links between the switches are shared between many users, the costs of packet switching are lower than those of circuit switching. Delays (latency) and variability of delay (jitter) are greater in packet-switched networks than in circuit-switched networks. This is because the links are shared, and packets must be entirely received at one switch before moving to the next. Despite the latency and jitter inherent in shared networks, modern technology allows satisfactory transport of voice and even video communications on these networks.

In Figure 1-19, Server A is sending data to Server B. Packets may not necessarily always take the same path to reach the destination. Each packet may take different routes to reach Server B.

**Figure 1-19** Packet Switching

## Virtual Circuits

Packet-switched networks may establish routes through the switches for particular end-to-end connections. These routes are called virtual circuits (VC). A VC is a logical circuit created within a shared network between two network devices. Two types of VCs exist:

- **Permanent virtual circuit (PVC):** A permanently established virtual circuit that consists of one mode: data transfer. PVCs are used in situations in which data transfer between devices is constant. PVCs decrease the bandwidth use associated with establishing and terminating VCs, but they increase costs because of constant virtual circuit availability. PVCs generally are configured by the service provider when an order is placed for service.
- **Switched virtual circuit (SVC):** A VC that is dynamically established on demand and terminated when transmission is complete. Communication over an SVC consists of three phases: circuit establishment, data transfer, and circuit termination. The establishment phase involves creating the VC between the source and destination devices, with SVC entries stored in lookup tables held in memory. Data transfer involves transmitting data between the devices over the VC, and the circuit termination phase involves tearing down the VC between the source and destination devices. SVCs are used in situations in which data transmission between devices is intermittent, largely to save costs. SVCs release the circuit when transmission is complete, which results in less expensive connection charges than those incurred by PVCs, which maintain constant virtual circuit availability.

**Note**

Virtual circuits are discussed in more detail in Chapter 3, “Frame Relay.”

## Connecting to a Packet-Switched Network

To connect to a packet-switched network, a subscriber needs a local loop to the nearest location where the provider makes the service available. This is called the service’s point of presence (POP). Normally this is a dedicated leased line. This line is much shorter than a leased line connected directly between the subscriber locations. In addition, this one line to the POP can carry several VCs, allowing it to provide connections to multiple destinations. Because it is likely that not all the VCs require maximum demand simultaneously, the capacity of the *leased line* can be smaller than the sum of the individual VCs. Examples of packet- or cell-switched connections include

- X.25
- Frame Relay
- ATM

## WAN Connection Options

This section covers various WAN connection options, including private dedicated links, private switched links, and public connection options using the Internet.

## WAN Link Connection Options

Many options for implementing WAN solutions are currently available. They differ in technology, speed, and cost. Familiarity with these technologies is an important part of network design and evaluation:

Figure 1-20 provides a high-level view of the various WAN link connection options:

- **Private WAN connection options:** Private WAN connections include both dedicated and switched communication link options:
  - **Dedicated communication links:** When permanent dedicated connections are required, point-to-point lines are used with various capacities that are limited only by the underlying physical facilities and the willingness of users to pay for these dedicated lines. A point-to-point link provides a preestablished WAN communications path from the customer premises through the provider network to a remote destination. Point-to-point lines usually are leased from a carrier and are also called leased lines.

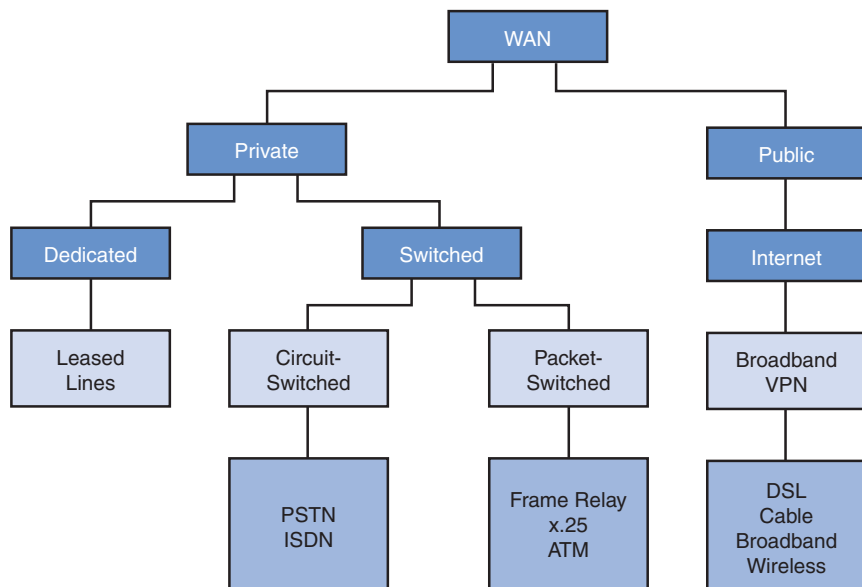
- **Switched communication links:** Switched communication links can be either circuit-switched or packet-switched:

**Circuit-switched communication links:** Circuit switching dynamically establishes a dedicated connection for voice or data between a sender and a receiver. Before communication can start, it is necessary to establish the connection through the service provider's network. Examples of circuit-switched communication links are analog dialup (PSTN) and ISDN.

**Packet-switched communication links:** Many WAN users do not make efficient use of the fixed bandwidth that is available with dedicated, switched, or permanent circuits, because the data flow fluctuates. Communications providers have data networks available to more appropriately service these users. In packet-switched networks, the data is transmitted in labeled frames, cells, or packets. Packet-switched communication links include Frame Relay, ATM, X.25, and Metro Ethernet.

- **Public WAN connection options:** Public connections use the global Internet infrastructure. Until recently, the Internet was not a viable networking option for many businesses because of the significant security risks and lack of adequate performance guarantees in an end-to-end Internet connection. With the development of VPN technology, however, the Internet is now an inexpensive and secure option for connecting to teleworkers and remote offices where performance guarantees are not critical. Internet WAN connection links are through broadband services such as DSL, cable modem, and broadband wireless, and they are combined with VPN technology to provide privacy across the Internet.

**Figure 1-20** WAN Link Connection Options

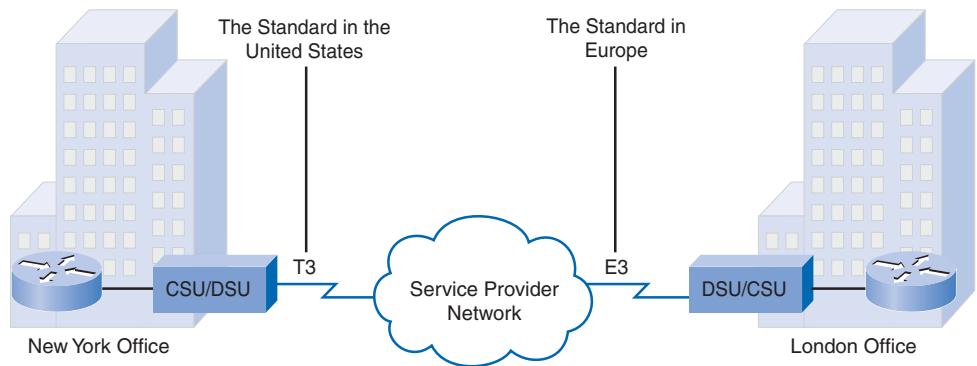


## Dedicated Connection Link Options

When permanent dedicated connections are required, a point-to-point link is used to provide a preestablished WAN communications path from the customer premises through the provider network to a remote destination.

Point-to-point lines usually are leased from a carrier and are called leased lines. Figure 1-21 shows a T3 and E3 circuit. This section describes how enterprises use leased lines to provide a dedicated WAN connection.

**Figure 1-21** Leased Lines



Leased lines are available in different capacities. They generally are priced based on the bandwidth required and the distance between the two connected points.

Table 1-1 lists the available leased-line types and their bit-rate capacities.

**Table 1-1** Leased-Line Types and Capacities

Line Type	Bit Rate Capacity	Line Type	Bit Rate Capacity
56	56 kbps	OC-9	466.56 Mbps
64	64 kbps	OC-12	622.08 Mbps
T1	1.544 Mbps	OC-18	933.12 Mbps
E1	2.048 Mbps	OC-24	1244.16 Mbps
J1	2.048 Mbps	OC-36	1866.24 Mbps
E3	34.064 Mbps	OC-48	2488.32 Mbps
T3	44.736 Mbps	OC-96	4976.64 Mbps
OC-1	51.84 Mbps	OC-192	9953.28 Mbps
OC-3	155.54 Mbps	OC-768	39,813.12 Mbps



Point-to-point links usually are more expensive than shared services such as Frame Relay. The cost of leased-line solutions can become significant when they are used to connect many sites over increasing distances. However, sometimes the benefits outweigh the cost of the leased line. The dedicated capacity removes latency and jitter between the endpoints. Constant availability is essential for some applications, such as VoIP and video over IP.

A router serial port is required for each leased-line connection. A CSU/DSU and the actual circuit from the service provider are also required.

Leased lines provide permanent dedicated capacity and are used extensively to build WANs. They have been the traditional connection of choice but have a number of disadvantages. Leased lines have a fixed capacity; however, WAN traffic is often variable, leaving some of the capacity unused. In addition, each endpoint needs a separate physical interface on the router, which increases equipment costs. Any changes to the leased line generally require a site visit by the carrier.

## Circuit-Switched Connection Options

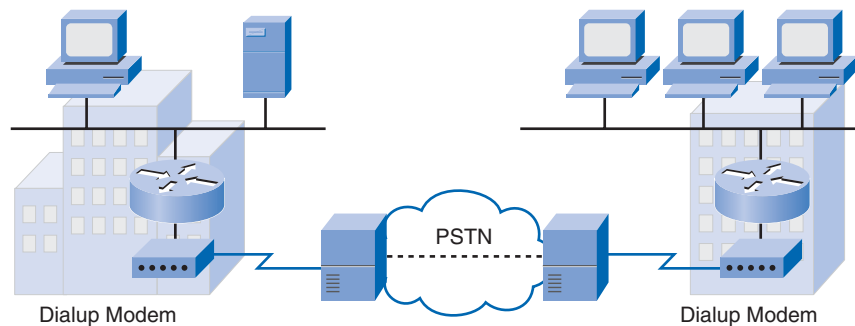
Circuit-switched networks establish a dedicated connection for voice or data between a sender and a receiver. Before any communications can begin, it is necessary to establish the connection through the service provider's network.

### Analog Dialup

When intermittent, low-volume data transfers are needed, modems and analog dialed telephone lines provide low capacity and dedicated switched connections.

This section describes the pros and cons of using analog dialup connection options and describes the types of business scenarios that benefit most from this type of option. Figure 1-22 shows an analog dialup connection.

**Figure 1-22** WAN Built with an Intermittent Connection Using a Modem and the Voice Telephone Network



Traditional *telephony* uses a copper cable, called the local loop, to connect the telephone handset in the subscriber premises to the CO. The signal on the local loop during a call is a continuously varying electronic signal that is a translation of the subscriber analog voice signal.

Traditional local loops can transport binary computer data through the voice telephone network using a modem. The modem modulates the binary data into an analog signal at the source and demodulates the analog signal into binary data at the destination. The physical characteristics of the local loop and its connection to the PSTN limit the signal's rate to less than 56 kbps.

For small businesses, these relatively low-speed dialup connections are adequate for the exchange of sales figures, prices, routine reports, and e-mail. Using automatic dialup at night or on weekends for large file transfers and data backup can take advantage of lower off-peak tariffs (line charges). Tariffs are based on the distance between the endpoints, time of day, and the call's duration.

The advantages of modem and analog lines are simplicity, availability, and low implementation cost. The disadvantages are the low data rates and a relatively long connection time. The dedicated circuit has little delay or jitter for point-to-point traffic, but voice or video traffic does not operate adequately at these low bit rates.

## Integrated Services Digital Network

Integrated Services Digital Network (ISDN) is a circuit-switching technology that enables the local loop of a PSTN to carry digital signals, resulting in higher-capacity switched connections. ISDN changes the internal connections of the PSTN from carrying analog signals to time-division multiplexed (TDM) digital signals. TDM allows two or more signals or bit streams to be transferred as subchannels in one communication channel. The signals appear to transfer simultaneously, but physically they take turns on the channel. A data block of subchannel 1 is transmitted during time slot 1, subchannel 2 during time slot 2, and so on. One TDM frame consists of one time slot per subchannel. TDM is described in more detail in Chapter 2, "PPP."

ISDN turns the local loop into a TDM digital connection. This change enables the local loop to carry digital signals that result in higher-capacity switched connections. The connection uses 64-kbps *bearer (B) channels* to carry voice or data and a *signaling, delta channel* for call setup and other purposes.

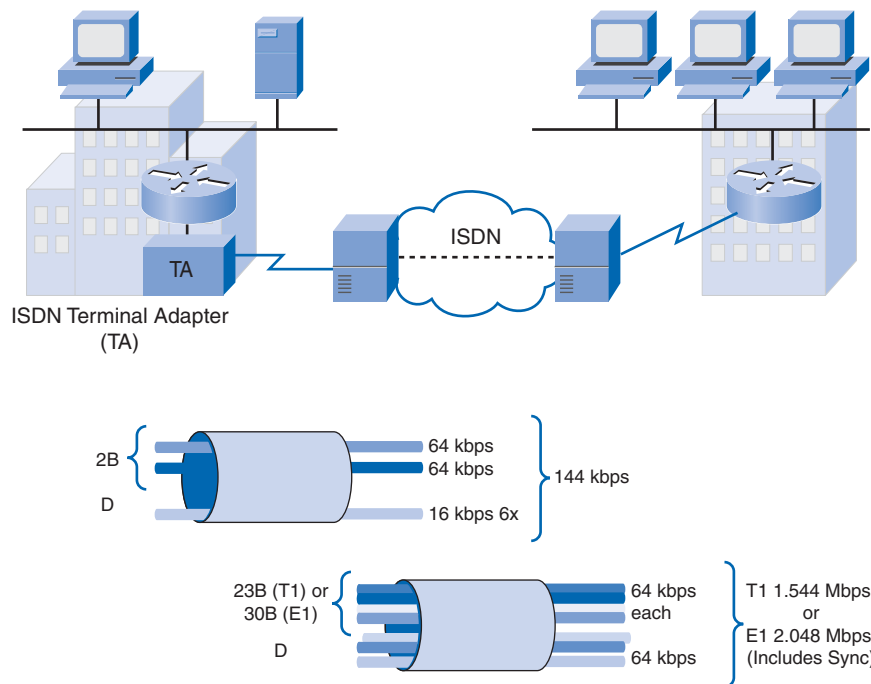
There are two types of ISDN interfaces:

- **Basic Rate Interface (BRI):** ISDN is intended for the home and small enterprise and provides two 64-kbps B channels and a 16-kbps D channel. The BRI D channel is designed for control and often is underused, because it has only two B channels to control. Therefore, some providers allow the D channel to carry data at low bit rates, such as X.25 connections at 9.6 kbps.

- Primary Rate Interface (PRI):** ISDN is also available for larger installations. PRI delivers 23 B channels with 64 kbps and one D channel with 64 kbps in North America, for a total bit rate of up to 1.544 Mbps. This includes some additional overhead for *synchronization*. In Europe, Australia, and other parts of the world, ISDN PRI provides 30 B channels and one D channel, for a total bit rate of up to 2.048 Mbps, including synchronization overhead. In North America, PRI corresponds to a T1 connection. The PRI rate of lines outside North America corresponds to an *E1* or *J1* connection.

Figure 1-23 illustrates the various differences between ISDN BRI and PRI lines.

**Figure 1-23** ISDN Network Infrastructure and PRI/BRI Line Capacity



For WAN links, which require low bandwidth, the BRI ISDN can provide an ideal connection mechanism. BRI has a *call setup time* that is less than a second, and the 64-kbps B channel provides greater capacity than an analog modem link. If greater capacity is required, a second B channel can be activated to provide a total of 128 kbps. Although this is inadequate for video, it permits several simultaneous voice conversations in addition to data traffic.

Another common application of ISDN is to provide additional capacity as needed on a leased-line connection. The leased line is sized to carry average traffic loads, and ISDN is added during peak demand periods. ISDN is also used as a backup if the leased line fails. ISDN tariffs are based on a per-B-channel basis and are similar to those of analog voice connections.

With PRI ISDN, multiple B channels can be connected between two endpoints. This allows for videoconferencing and high-bandwidth data connections with no latency or jitter. However, multiple connections can be very expensive over long distances.

#### Note

Although ISDN is still an important technology for telephone service provider networks, it is declining in popularity as an Internet connection option with the introduction of high-speed DSL and other broadband services. The “Consumer and Industry Perspectives” section at <http://en.wikipedia.org/wiki/ISDN> provides a good discussion of ISDN worldwide trends.

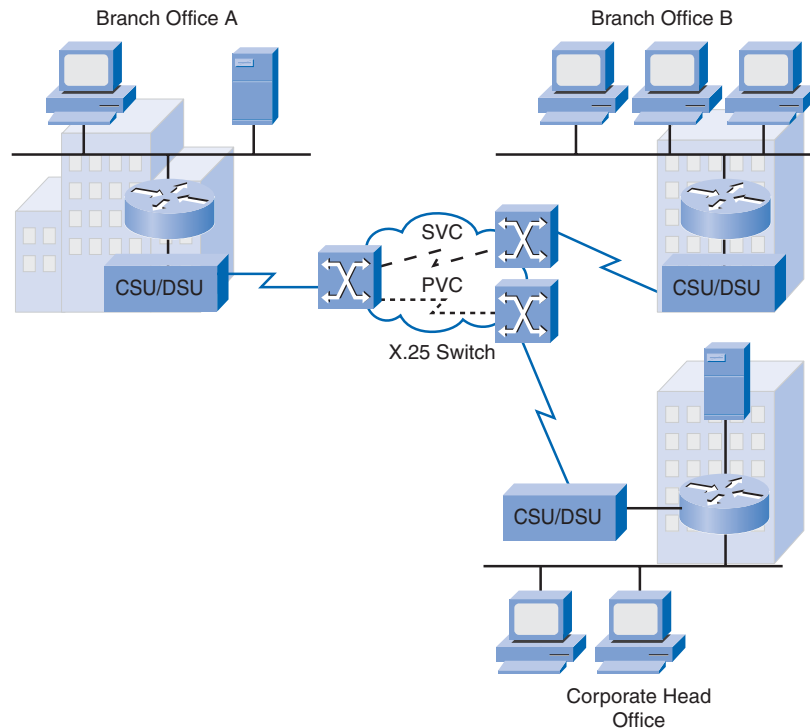
## Packet-Switched Connection Options

The most common packet-switching technologies used in today’s enterprise WANs include legacy X.25, Frame Relay, and ATM, as described in the following sections.

### X.25

Figure 1-24 shows an X.25 network. X.25 is a legacy network-layer protocol that provides subscribers with a network address. Virtual circuits can be established through the network with call request packets to the target address. The resulting SVC is identified by a channel number. Data packets labeled with the channel number are delivered to the corresponding address. Multiple channels can be active on a single connection.

**Figure 1-24** X.25 Network



Typical X.25 applications are point-of-sale card readers. These readers use X.25 in dialup mode to validate transactions on a central computer. For these applications, the low bandwidth and high latency are not a concern, and the low cost makes X.25 affordable.

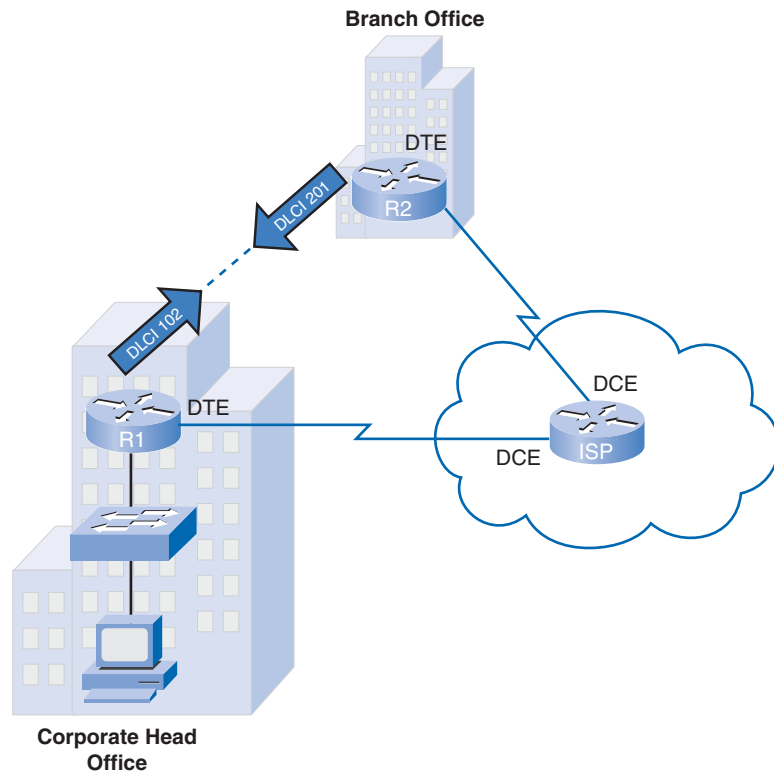
X.25 link speeds vary from 2400 bps up to 2 Mbps. However, public networks usually are low-capacity, with speeds rarely exceeding 64 kbps.

X.25 networks are now in dramatic decline, being replaced by newer Layer 2 technologies such as Frame Relay, ATM, and ADSL. However, they are still in use in many portions of the developing world, which have limited access to newer technologies.

## Frame Relay

Figure 1-25 shows a Frame Relay network. Although the network layout appears similar to X.25, Frame Relay differs from X.25 in several ways. Most importantly, it is a much simpler protocol, operating strictly at Layer 2, whereas X.25 additionally provides Layer 3 services. Frame Relay implements no error or flow control. The simplified handling of frames leads to reduced latency, and measures taken to avoid frame buildup at intermediate switches help reduce jitter. Frame Relay offers data rates up to 4 Mbps, with some providers offering even higher rates.

**Figure 1-25** Frame Relay Network



Frame Relay VCs are uniquely identified by a DLCI, which ensures bidirectional communication from one DTE device to another. Most Frame Relay connections are PVCs rather than SVCs.

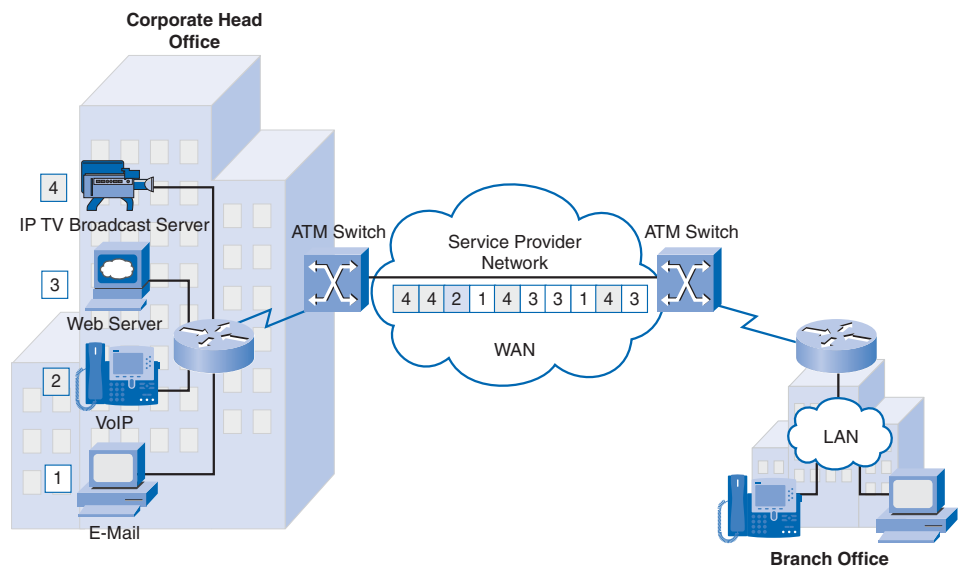
Frame Relay provides permanent, shared, medium-bandwidth connectivity that carries both voice and data traffic. Frame Relay is ideal for connecting enterprise LANs. The router on the LAN needs only a single interface, even when multiple VCs are used. The short-leased line to the Frame Relay network edge allows cost-effective connections between widely scattered LANs.

Frame Relay is described in more detail in Chapter 3.

## ATM

Figure 1-26 shows an ATM network. Asynchronous Transfer Mode (ATM) technology can transfer voice, video, and data through private and public networks. It is built on a cell-based architecture rather than on a frame-based architecture. ATM cells are always a fixed length of 53 bytes. The ATM cell contains a 5-byte ATM header followed by 48 bytes of ATM payload. Small, fixed-length cells are well suited for carrying voice and video traffic, because this traffic is intolerant of delay. Video and voice traffic do not have to wait for a larger data packet to be transmitted.

**Figure 1-26** ATM Network



The 53-byte ATM *cell* is less efficient than the bigger frames and packets of Frame Relay and X.25. Furthermore, the ATM cell has at least 5 bytes of overhead for each 48-byte payload. When the cell is carrying segmented network layer packets, the overhead is higher, because the ATM switch must be able to reassemble the packets at the destination. A typical ATM line needs almost 20 percent more bandwidth than Frame Relay to carry the same volume of network layer data.

ATM was designed to be extremely scalable. It can support link speeds of T1/E1 to OC-12 (622 Mbps) and higher.

ATM offers both PVCs and SVCs, although PVCs are more common with WANs. And as with other shared technologies, ATM allows multiple VCs on a single leased-line connection to the network edge.

## Internet Connection Options

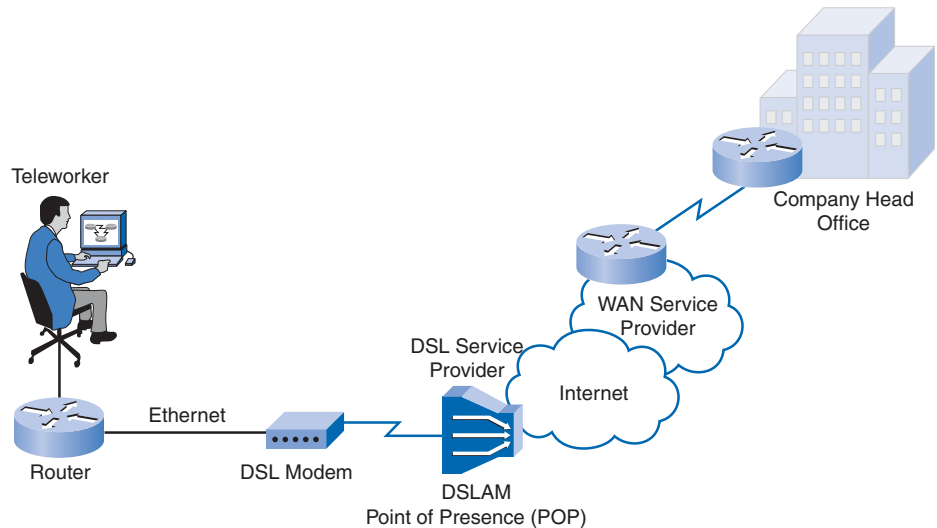
The Internet is an inexpensive and secure option for connecting to teleworkers and remote offices where performance guarantees are not critical.

Broadband connection options typically are used to connect telecommuting employees to a corporate site over the Internet. These options include DSL, cable, and wireless.

### DSL

DSL technology, shown in Figure 1-27, is an always-on connection technology that uses existing twisted-pair telephone lines to transport high-bandwidth data and provides IP services to subscribers. A DSL modem converts an Ethernet signal from the user device into a DSL signal, which is transmitted to the central office.

**Figure 1-27** DSL



Multiple DSL subscriber lines are multiplexed into a single high-capacity link using a DSL access multiplexer (DSLAM) at the provider location. DSLAMs incorporate TDM technology to aggregate many subscriber lines into a single medium, generally a T3 (DS3) connection. Current DSL technologies use sophisticated coding and modulation techniques to achieve data rates of up to 8.192 Mbps.

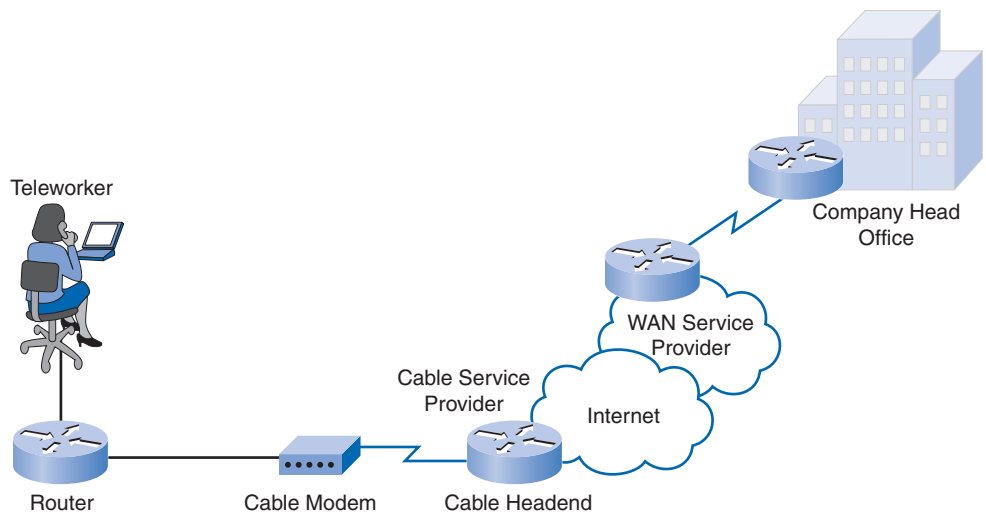
A wide variety of DSL types, standards, and emerging technologies exist. DSL is now a popular choice for enterprise IT departments to support home workers. Generally, a subscriber cannot choose to connect to an enterprise network directly. The subscriber must first connect to an ISP, and then an IP connection is made through the Internet to the enterprise. Security risks are incurred in this process, but they can be mediated with security measures.

## Cable Modem

*Coaxial cable* is widely used in urban areas to distribute television signals. Network access is available from some *cable television* networks. This allows for greater bandwidth than the conventional telephone local loop.

Cable modems provide an always-on connection and a simple installation. Figure 1-28 shows how a subscriber connects a computer or LAN router to the cable modem, which translates the digital signals into the broadband frequencies used for transmitting on a cable television network. The local cable TV office, which is called the cable headend, contains the computer system and databases needed to provide Internet access. The most important component located at the *headend* is the cable modem termination system (CMTS). It sends and receives digital cable modem signals on a cable network and is necessary for providing Internet services to cable subscribers.

**Figure 1-28** Cable Modem





Cable modem subscribers must use the ISP associated with the service provider. All the local subscribers share the same cable bandwidth. As more users join the service, available bandwidth may be below the expected rate.

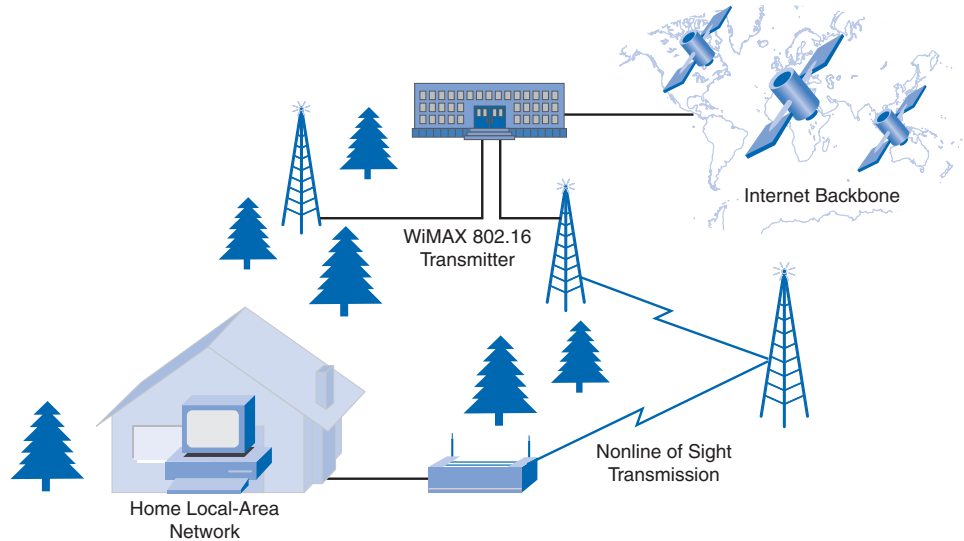
## Broadband Wireless

Wireless technology uses the unlicensed radio spectrum to send and receive data. The unlicensed spectrum is accessible to anyone who has a wireless router and wireless technology in the device he or she is using.

Until recently, one limitation of wireless access has been the need to be within the local transmission range (typically less than 100 feet) of a wireless router or a wireless modem that has a wired connection to the Internet. The following new developments in broadband wireless technology are changing this situation:

- **Municipal Wi-Fi:** Many cities have begun setting up municipal wireless networks. Some of these networks provide high-speed Internet access for free or for substantially less than the price of other broadband services. Others are for city use only, allowing police and fire departments and other city employees to do certain aspects of their jobs remotely. To connect to a municipal Wi-Fi, a subscriber typically needs a wireless modem, which provides a stronger radio and directional antenna than conventional wireless adapters. Most service providers provide the necessary equipment for free or for a fee, much like they do with DSL or cable modems.
- **WiMAX:** Worldwide Interoperability for *Microwave* Access (WiMAX) is a new technology that is just beginning to come into use. It is described in IEEE standard 802.16. WiMAX provides high-speed broadband service with wireless access and provides broad coverage like a cell phone network rather than through small Wi-Fi hotspots. WiMAX operates in a similar way to Wi-Fi, but at higher speeds, over greater distances, and for a greater number of users. It uses a network of WiMAX towers that are similar to cell phone towers, as shown in Figure 1-29. To access a WiMAX network, subscribers must subscribe to an ISP that has a WiMAX tower within 10 miles of their location. They also need a WiMAX-enabled computer and a special encryption code to get access to the base station.
- **Satellite Internet:** This is typically used by rural users where cable and DSL are unavailable. A satellite dish provides two-way (upload and download) data communications. The upload speed is about one-tenth of the 500-kbps download speed. Cable and DSL have higher download speeds, but satellite systems are about ten times faster than an analog modem. To access satellite Internet services, subscribers need a satellite dish, two modems (uplink and downlink), and coaxial cables between the dish and the modem.

Figure 1-29 Broadband Wireless



DSL, cable, and wireless broadband services are described in more detail in Chapter 6, “Teleworker Services.”

## VPN Technology

Security risks are incurred when a teleworker or remote office uses broadband services to access the corporate WAN over the Internet. To address security concerns, broadband services provide capabilities for using Virtual Private Network (VPN) connections to a VPN server, which typically is located at the corporate site.

A VPN is an encrypted connection between private networks over a public network such as the Internet. Instead of using a dedicated Layer 2 connection such as a leased line, a VPN uses virtual connections called VPN tunnels, which are routed through the Internet from the company’s private network to the remote site or employee host.

## VPN Benefits

Benefits of VPN include the following:

- **Cost savings:** VPNs enable organizations to use the global Internet to connect remote offices and remote users to the main corporate site, thus eliminating expensive dedicated WAN links and modem banks.
- **Security:** VPNs provide the highest level of security by using advanced encryption and authentication protocols that protect data from unauthorized access.

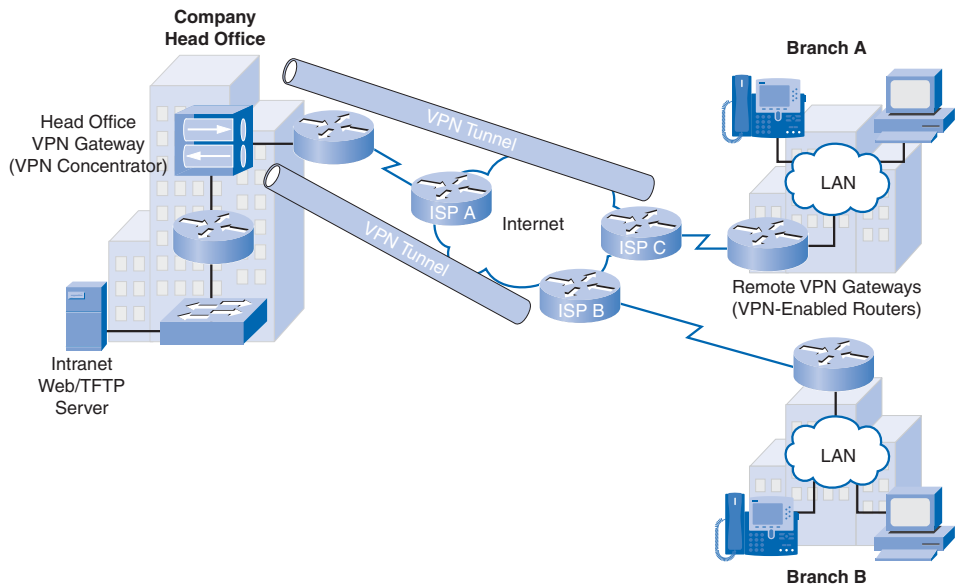
- **Scalability:** Because VPNs use the Internet infrastructure within ISPs and devices, it is easy to add new users. Corporations can add large amounts of capacity without adding significant infrastructure.
- **Compatibility with broadband technology:** VPN technology is supported by broadband service providers such as DSL and cable, so mobile workers and telecommuters can take advantage of their home high-speed Internet service to access their corporate networks. Business-grade, high-speed broadband connections can also provide a cost-effective solution for connecting remote offices.

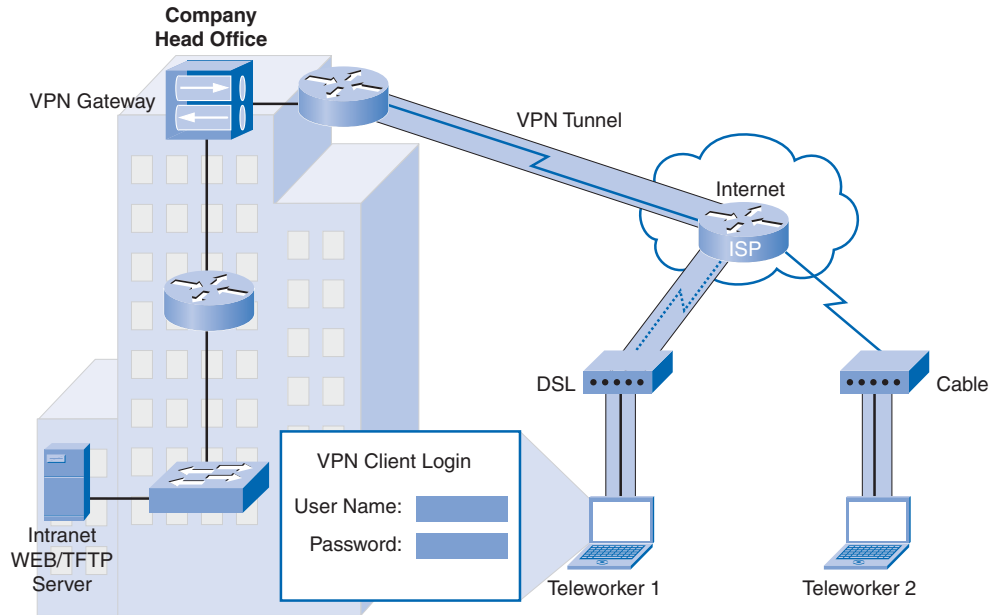
## Types of VPN Access

Two types of VPN access exist:

- **Site-to-site VPNs:** Site-to-site VPNs connect entire networks to each other. For example, they can connect a branch office network to a company headquarters network, as shown in Figure 1-30. Each site is equipped with a VPN gateway, such as a router, *fire-wall*, VPN concentrator, or security appliance. In the figure, a remote branch office uses a site-to-site VPN to connect with the corporate head office.
- **Remote-access VPNs:** Remote-access VPNs enable individual hosts, such as telecommuters, mobile users, and extranet consumers, to access a company network securely over the Internet, as shown in Figure 1-31. Each host typically has VPN client software loaded or uses a web-based client.

**Figure 1-30** Site-to-Site VPNs



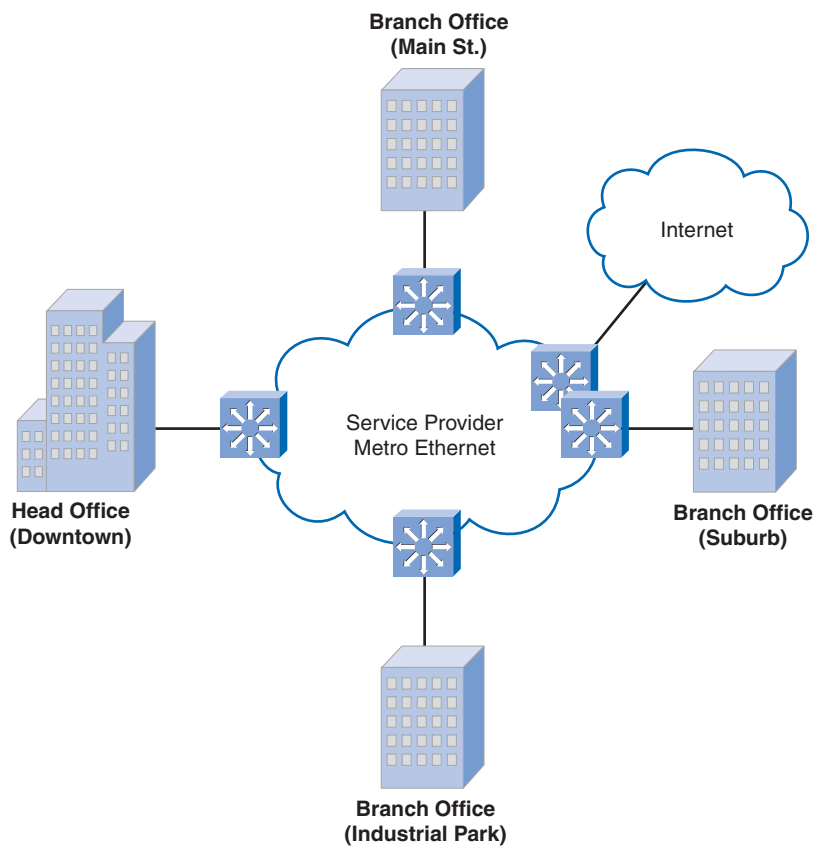
**Figure 1-31** Remote-Access VPNs

## Metro Ethernet

Metro Ethernet is a rapidly maturing networking technology that broadens Ethernet to the public networks run by telecommunications companies. IP-aware Ethernet switches enable service providers to offer enterprises converged voice, data, and video services such as IP telephony, video streaming, imaging, and data storage. Figure 1-32 shows that by extending Ethernet to the metropolitan area, companies can provide their remote offices with reliable access to applications and data on the corporate headquarters LAN.

Here are some benefits of Metro Ethernet:

- **Reduced expenses and administration:** Metro Ethernet provides a switched, high-bandwidth Layer 2 network that can manage data, voice, and video all on the same infrastructure. This characteristic increases bandwidth and eliminates expensive conversions to ATM and Frame Relay. The technology enables businesses to inexpensively connect numerous sites in a metropolitan area to each other and to the Internet.
- **Easy integration with existing networks:** Metro Ethernet connects easily to existing Ethernet LANs, reducing installation costs and time.
- **Enhanced business productivity:** Metro Ethernet enables businesses to take advantage of productivity-enhancing IP applications that are difficult to implement on TDM or Frame Relay networks, such as hosted IP communications, VoIP, and streaming and broadcast video.

**Figure 1-32** Service Provider Metro Ethernet

## Choosing a WAN Link Connection

Now that you have looked at the variety of WAN connection options, how do you choose the best technology to meet the requirements of a specific business? Table 1-2 compares the advantages and disadvantages of the WAN connection options that we have discussed in this chapter.

**Table 1-2** Choosing a WAN Link Connection

<b>Option</b>	<b>Description</b>	<b>Advantages</b>	<b>Disadvantages</b>	<b>Sample Protocols</b>
Leased line	Point-to-point connection between two computers' LANs.	Most secure	Expensive	PPP, HDLC, SDLC
Circuit switching	A dedicated circuit path is created between endpoints. Best example is dialup connections.	Less expensive	Call setup	PPP, ISDN
Packet switching	Devices transport packets via a shared single point-to-point or point-to-multipoint link across a carrier inter network. Variable-length packets are transmitted over PVCs or SVCs.	Highly efficient use of bandwidth	Shared media across link	X.25, Frame Relay
Cell relay	Similar to packet switching, but uses fixed-length cells instead of variable-length packets. Data is divided into fixed-length cells and then transported across virtual circuits.	Best for simultaneous use of voice and data	Overhead can be considerable	ATM
Internet	Connectionless packet switching using the Internet as the WAN infrastructure. Uses network addressing to deliver packets. Because of security issues, VPN technology must be used.	Least expensive, globally available	Least secure	VPN, DSL, cable modem, wireless

This information is a good start. In addition, to help you in the decision-making process, the following sections list some questions to ask yourself when choosing a WAN connection option.

## What Is the Purpose of the WAN?

Do you want to connect local branches in the same city area, connect remote branches, connect to a single branch, connect to customers, connect to business partners, or some combination of these? If the WAN is for providing authorized customers or business partners limited access to the company intranet, what is the best option?

## What Is the Geographic Scope?

Is it local, regional, global, one-to-one (single branch), one-to-many branches, many-to-many (distributed)? Depending on the range, some WAN connection options may be better than others.

## What Are the Traffic Requirements?

Traffic requirements to consider include the following:

- Traffic type (data only, VoIP, video, large files, streaming files) determines the quality and performance requirements. For example, if you are sending a lot of voice or streaming video traffic, ATM may be the best choice.
- Traffic volumes depending on type (voice, video, or data) for each destination determine the bandwidth capacity required for the WAN connection to the ISP.
- Quality requirements may limit your choices. If your traffic is highly sensitive to latency and jitter, you can eliminate any WAN connection options that cannot provide the required quality.
- Security requirements (data integrity, confidentiality, and security) are an important factor if the traffic is of a highly confidential nature or if provides essential services, such as emergency response.

## Should the WAN Use a Private or Public Infrastructure?

A private infrastructure offers the best security and confidentiality, whereas the public Internet infrastructure offers the most flexibility and lowest ongoing expense. Your choice depends on the purpose of the WAN, the types of traffic it carries, and the available operating budget. For example, if the purpose is to provide a nearby branch with high-speed secure services, a private dedicated or switched connection may be best. If the purpose is to connect many remote offices, a public WAN using the Internet may be the best choice. For distributed operations, a combination of options may be the best solution.

## For a Private WAN, Should It Be Dedicated or Switched?

Real-time, high-volume transactions have special requirements that could favor a dedicated line, such as traffic flowing between the data center and the corporate head office. If you are connecting to a local single branch, you could use a dedicated leased line. However, that

option would become very expensive for a WAN connecting multiple offices. In that case, a switched connection might be better.

### **For a Public WAN, What Type of VPN Access Do You Need?**

If the purpose of the WAN is to connect a remote office, a site-to-site VPN may be the best choice. To connect teleworkers or customers, remote-access VPNs are a better option. If the WAN is serving a mixture of remote offices, teleworkers, and authorized customers, such as a global company with distributed operations, a combination of VPN options may be required.

### **Which Connection Options Are Available Locally?**

In some areas, not all WAN connection options are available. In this case, your selection process is simplified, although the resulting WAN may provide less-than-optimal performance. For example, in a rural or remote area, the only option may be broadband satellite Internet access.

### **What Is the Cost of the Available Connection Options?**

Depending on the option you choose, the WAN can be a significant ongoing expense. The cost of a particular option must be weighed against how well it meets your other requirements. For example, a dedicated leased line is the most expensive option, but the expense may be justified if it is critical to ensure secure transmission of high volumes of real-time data. For less-demanding applications, a cheaper switched or Internet connection option may be more suitable. Also, wireless point-to-point bridges are becoming a potential alternative to leased lines.

As you can see, you must consider many important factors when choosing an appropriate WAN connection. Following the guidelines just described, as well as those described by the Cisco Enterprise Architecture, you should now be able to choose an appropriate WAN connection to meet the requirements of different business scenarios.



## Summary

A WAN is a data communications network that operates beyond the geographic scope of a LAN.

As companies grow, adding more employees, opening branch offices, and expanding into global markets, their requirements for integrated services change. These business requirements drive companies' network requirements.

The Cisco Enterprise Architecture expands on the Hierarchical Network Model by further dividing the enterprise network into physical, logical, and functional areas.

Implementing a Cisco Enterprise Architecture provides a secure, robust network with high availability that facilitates the deployment of converged networks.

WANs operate in relation to the OSI reference model, primarily on Layers 1 and 2.

Devices that put data on the local loop are called data circuit-terminating equipment or data communications equipment (DCE). The customer devices that pass the data to the DCE are called data terminal equipment (DTE). The DCE primarily provides an interface for the DTE into the communication link on the WAN cloud.

The physical demarcation point is the place where the responsibility for the connection changes from the enterprise to the service provider.

Data link layer protocols define how data is encapsulated for transmission to remote sites and the mechanisms for transferring the resulting frames.

A circuit-switching network establishes a dedicated circuit (or channel) between nodes and terminals before the users may communicate.

A packet-switching network splits traffic data into packets that are routed over a shared network. Packet-switching networks do not require a circuit to be established and allow many pairs of nodes to communicate over the same channel.

A point-to-point link provides a preestablished WAN communications path from the customer premises through the provider network to a remote destination. Point-to-point links use leased lines to provide a dedicated connection.

Circuit-switching WAN options include analog dialup and ISDN. Packet-switching WAN options include X.25, Frame Relay, and ATM. ATM transmits data in 53-byte cells rather than frames. ATM is best suited to video traffic.

Internet WAN connection options include broadband services, such as DSL, cable modem or broadband wireless, and Metro Ethernet. VPN technology enables businesses to provide secure teleworker access through the Internet over broadband services.

## Labs

The activities and labs available in the companion *Accessing the WAN, CCNA Exploration Labs and Study Guide* (ISBN 1-58713-212-5) provide hands-on practice with the following topic introduced in this chapter:



### Lab 1-1: Challenge Review (1.4.1)

In this lab, you review basic routing and switching concepts. Try to do as much on your own as possible. Refer to previous material when you cannot proceed on your own.

#### Note

Configuring three separate routing protocols—RIP, OSPF, and EIGRP—to route the same network definitely is not a best practice. It should be considered a *worst* practice and is not something that would be done in a production network. It is done here so that you can review the major routing protocols before proceeding and see a dramatic illustration of the concept of administrative distance.



Many of the Hands-on Labs include Packet Tracer Companion Activities, where you can use Packet Tracer to complete a simulation of the lab. Look for this icon in *Accessing the WAN, CCNA Exploration Labs and Study Guide* for Hands-on Labs that have a Packet Tracer Companion.

## Check Your Understanding

Complete all the review questions listed here to test your understanding of the topics and concepts in this chapter. Answers are listed in Appendix, “Check Your Understanding and Challenge Questions Answer Key.”

1. Which of the following items are considered WAN devices? (Choose three.)
  - A. Bridge
  - B. Modem
  - C. Router
  - D. Ethernet switch
  - E. Access server
  - F. Repeater
  
2. Which layer of the hierarchical network design model is often called the backbone?
  - A. Access
  - B. Distribution
  - C. Network
  - D. Core
  - E. Workgroup
  - F. WAN
  
3. Match each term with its definition:  
Circuit switching  
Packet switching  
Connection-oriented packet switching  
Connectionless packet switching
  - A. A switching technology in which each switch must evaluate the packet’s address to determine where to send it.
  - B. A switching technology in which a virtual circuit exists only while a packet travels through it.
  - C. A switching technology that establishes routes through the switches for particular end-to-end connections.
  - D. A switching technology that has a preestablished dedicated circuit (or channel) between nodes and terminals.

4. Match each term with its packet-switched technology definition:

Metro Ethernet

X.25

ATM

Frame Relay

- A. Provides a high-bandwidth Layer 2 network that can manage data, voice, and video all on the same infrastructure.
  - B. Built on a cell-based architecture in which the cell has a fixed length of 53 bytes.
  - C. Operates at the data link layer, and the PVC is identified by a Data Link Control Identifier.
  - D. Operates at the network layer, and the SVC is identified by a channel number.
5. Which device is commonly used as Data Terminal Equipment?
- A. ISDN
  - B. Modem
  - C. Router
  - D. CSU/DSU
6. Which type of WAN connection should you choose when a dedicated point-to-point WAN communications path from the customer premises through the provider network to a remote destination is required?
- A. ISDN
  - B. Analog dialup
  - C. ATM
  - D. Frame Relay
  - E. Leased line
7. How are Frame Relay virtual circuits identified?
- A. CIR
  - B. DLCI
  - C. VPI
  - D. MAC
  - E. SPID

8. What WAN technology is designed to deliver data, voice, and video simultaneously built on a cell-based architecture?
  - A. ATM
  - B. Cable
  - C. Frame Relay
  - D. ISDN
  
9. Which architecture enables enterprises to offer important network services—such as security, new communication services, and improved application performance—to every office, regardless of its size or proximity to headquarters?
  - A. Cisco Enterprise Campus Architecture
  - B. Cisco Enterprise Data Center Architecture
  - C. Cisco Enterprise Branch Architecture
  - D. Cisco Enterprise Teleworker Architecture
  
10. At which layer of the hierarchical network model do users connect to the network?
  - A. Application
  - B. Access
  - C. Distribution
  - D. Network
  - E. Core
  
11. ISDN PRI is composed of how many B channels in North America?
  - A. 2
  - B. 16
  - C. 23
  - D. 30
  - E. 64
  
12. The ability to connect securely to a private network over a public network is provided by which WAN technology?
  - A. DSL
  - B. Frame Relay
  - C. ISDN
  - D. PSTN
  - E. VPN

13. Which hierarchical network model layer is responsible for containing network problems to the workgroups in which they occur?
  - A. Application
  - B. Access
  - C. Distribution
  - D. Network
  - E. Core
14. What term describes the cabling that connects the customer site to the nearest exchange of the WAN service provider?
  - A. CPE
  - B. CO
  - C. Local loop
  - D. DCE
  - E. DTE
15. Which goal can be accomplished by implementing the Cisco Enterprise Teleworker Architecture?
  - A. It allows the enterprise to add large branch sites that span geographic areas.
  - B. It allows the enterprise to deliver secure voice and data services to workers no matter where or when they work.
  - C. To reduce remote security threats, it forces users who are located at main sites to log on to resources.
  - D. It satisfies telephony requirements for users who are located at medium to large enterprise sites.
16. Describe the three layers of the hierarchical network model.
17. Describe the five modules of the Cisco Enterprise Architecture.
18. Compare and contrast the following WAN terms: CPE, CO, local loop, DCE, DTE, and demarcation point.
19. Compare and contrast the following WAN devices: modem, CSU/DSU, access server, WAN switch, and router.
20. Compare and contrast X.25, Frame Relay, and ATM.

## Challenge Questions and Activities

1. Explain the advantages and disadvantages of circuit-switched networks.
2. What are the differences between a site-to-site VPN and a remote-access VPN?

## Numerics

---

**3DES, 411**

## A

---

**access attacks, 208**

**access rates, 162**

**access servers, 21**

**access-class command, 342-343**

**access-list command, parameters, 329-330**

**ACLs, 310, 316-317**

applying to interfaces, 339-342

creating, 327

dynamic ACLs, 358-360

extended ACLs, 322

*applying to interfaces, 353, 355*

*configuring, 351-353*

*packets, testing, 349*

*placing, 325-326*

*port number lists, generating, 350-351*

functions performed by, 318

implicit “deny” behavior, 322

inbound, 319-320

named ACLs, 324

*creating, 345-346*

*editing, 347-348*

named extended ACLs, creating, 355-357

numbered ACLs, 324

*editing, 343-345*

outbound, 319-320

placing, 324

reflexive ACLs, 360, 363

remarks, 331-332

removing, 330-331

router processing logic, 321

standard, 322-323

*configuring, 327-329*

*placing, 325*

time-based ACLs, 363-364

troubleshooting, 365-367

verifying, 346-347

VTY access, controlling, 342-343

wildcard masks, 332

*bit keywords, 337-339*

*calculating, 336-337*

*IP subnets, matching, 334-337*

**activity logging on routers, 249-250**

**address mapping**

Frame Relay

*dynamic mapping, 145-146*

*Inverse ARP, 145*

*LMI, 150, 152*

*static mapping, 146*

static mapping, 156-158

**addressing, IPv6, 493**

IPv6 global unicast address, 494

loopback addresses, 496

private addresses, 496

reserved addresses, 496

unspecified addresses, 497

**ADSL (asynchronous DSL), 391-395**

**AES (Advanced Encryption Standard), 412**

**AH (Authentication Header), 416**

**analog dialup, 32-33**

**antenna site, 386**

**antivirus software, 220**

**any option (wildcard masking), 337, 339**

**APIPA (Automatic Private IP Addressing), 451**

**application layer, troubleshooting, 589-594**

**applications, security, 224**

**applying ACLs to interfaces, 339-342**

extended ACLs, 353-355

**asymmetric encryption, 412-413**

**ATM (Asynchronous Transfer Mode), 37, 73, 567**

**attacks**

access attacks, 208

DDoS, 214-217

DoS, 212

malicious code, 217-219



## mitigation techniques

*antivirus software, 220**device hardening, 220**HIPS, 223**IDS, 223**IPS, 223**operating system patches, 222-223**personal firewalls, 221*

MITM, 211

port redirection, 210

reconnaissance, 206-207

seven-step process, 193

social engineering, 205

trust exploitation, 209-210

types of, 193-194

**authentication, 415**

PPP, 112

*CHAP, 110**configuring, 115-118**PAP, 109-110**troubleshooting, 118-119***AutoSecure, implementing on routers, 263-264****AUX ports, securing remote administration of routers, 243**

---

**B****backbone, 12****backing up software images, 284****bandwidth, 568-569****BE (excess burst), 165****BECN (Backward Explicit Congestion Notification), 141****BECN bit, 167****bit keywords for wildcard masks, 337-339****black hats, 192****BOOTP (Bootstrap Protocol), 435**

comparing with DHCP, 435-436

**bottom-up troubleshooting method, 545****branch networks, 8**

Enterprise Branch Architecture, 16

**BRI (Basic Rate Interface), 33****broadband, 382**

wireless, 40, 396

*meshed municipal Wi-Fi network, 397**satellite Internet, 399**single wireless router deployment, 397**standards, 400**WiMAX, 398***brute force attacks, 208****business networks, 5**

branch, 8

campus, 6-7

distributed, 9-10

small office, 6

**business requirements for teleworker services, 379****bursting, 164**

---

**C****cable, 385-386**

CMTS, 390-391

DOCSIS, 388-389

electromagnetic spectrum, 387

headend, 386

**cable analyzers, 557****cable modem, 39****cable taps, 386****cable testers, 556****calculating wildcard masks, 336-337****campus networks, 6-7**

Enterprise Campus Architecture, 15

**carrier protocols, 409****CATV (community antenna television), 386****CBIR (committed burst information rate), 165****CDMA (code-division multiple access), 389****cells, 38****CHAP (Challenge Handshake Authentication Protocol), 110**

configuring, 115-118

**CIR (committed information rate), 163****circuit-switched connections, 26, 32**

analog dialup, 32-33

ISDN, 33-35

**Cisco ASA (Adaptive Security Appliance), 225****Cisco Enterprise Architecture, 13-14**

Enterprise Branch Architecture, 16

Enterprise Campus Architecture, 15

Enterprise Data Center Architecture, 16

Enterprise Edge Architecture, 15

Enterprise Teleworker Architecture, 16

**Cisco IOS dual stack, 500-502****Cisco IOS Software, 225**

- configuration files, managing, 280
- enable passwords, protecting, 238
- file naming conventions, 282-283
- image management, 283-294
- lost passwords, recovering, 297-300
- security features, applying to routers, 235-250
- troubleshooting, 294-297
- username passwords, protecting, 239

**Cisco IPS 4200 series sensors, 226****Cisco NAC appliance, 226****Cisco routers, configuring as DHCP server, 440-441****clear frame-relay inarp command, 177****clear ip nat translation command, 482****clock skew, 57****closed networks, 194-197****CMTS (cable modem termination system), 390-391****CO (central office), 19****commands**

- access-class, 342-343
- access-list, parameters, 329-330
- clear frame-relay inarp, 177
- clear ip nat translation, 482
- debug, 295-297
- debug frame-relay lmi, 178-179
- debug ip nat, 484
- debug ppp, 102
- debug ppp authentication, 118
- debug ppp error, 107-108
- debug ppp negotiation, 105-106
- debug ppp packet, 103-105
- dns-server, 441
- encapsulation hdlc, 76
- frame-relay interface dlci, 170
- interface serial, 169
- ip dhcp excluded-address, 440
- ip dhcp pool, 440
- ip helper-address, 451
- lease, 441
- ppp authentication, 116
- show, 294
- show controllers, 81-82
- show frame-relay lmi, 148, 174

- show frame-relay map, 145, 158
- show frame-relay pvc, 175-176
- show interface, 507
- show interfaces, 172
- show interfaces serial, 76-81, 118, 155
- show ip dhcp binding, 442
- show ip dhcp conflict, 456
- show ip dhcp server statistics, 443
- show ip interface, 449
- show ip nat statistics, 481
- show ip nat translations, 480
- show running-config, 343
- troubleshooting-related, 295-297
  - debug commands, 295-297*
  - show commands, 294*

**comments, adding to numbered ACLs, 344-345****comparing**

- cost effectiveness of Frame Relay and ISDN, 132
- DHCP and BOOTP, 435-436
- IPv6 and IPv4, 490-493
- NAT and NAT overload, 468

**complex ACLs**

- dynamic ACLs, 358-360
- reflexive ACLs, 360-363
- time-based ACLs, 363-364

**compression (PPP), configuring, 99****configuration files, managing, 285****configuring**

- ACLs
  - extended ACLs, 351-353*
  - named ACLs, 345-346*
  - standard, 327-329*
  - verifying configuration, 346-347*
- Cisco routers as DHCP server, 440-441
- DHCP clients, 447-449
- DHCP relay, 449-453
- DHCP servers with SDM, 453-455
- dynamic NAT, 471-473
- Frame Relay, 152
  - encapsulation type, 153-155*
  - static mapping, 146*
  - static maps, 156-158*
  - subinterfaces, 168-171*
- HDLC encapsulation, 75
- IPv6, 506
  - RIPng, 508-510*
- named extended ACLs, 355-357

- NAT overload, 473-475
  - for multiple public IP addresses, 475-477*
- port forwarding, 477-479
- PPP, 94-98
  - authentication, 115-118*
  - compression, 99*
  - link quality monitoring, 99*
  - load balancing, 100*
- routers
  - activity logging, 251-252*
  - network services, 252-264, 267*
  - security features, 236-241, 244-251*
- static NAT, 470-471
- congestion notification mechanisms, Frame Relay, 166-167**
- connecting to packet-switched networks, 29**
- connection options, selecting, 44-47**
- control plane (IPv6), 503-504**
- controlling VTY access with ACLs, 342-343**
- core routers, 21**
- cost effectiveness of Frame Relay, 131**
- CPE (customer premises equipment), 19, 392**
- crackers, 192**
- creating**
  - ACLs, 327
  - named ACLs, 345-346
  - named extended ACLs, 355-357
- CSA (Cisco Security Agent), 226**
- CSU/DSU, 20**
- CTS (Clear to Send) pin, 61**
- cycles per second, 388**

## D

- data centers, Enterprise Data Center Architecture, 16**
- data link layer, 18, 23-24**
  - encapsulation, 24-25
  - troubleshooting, 578-580
    - Frame Relay, 581-583*
    - PPP, 579-580*
    - STP loops, 583-584*
- data plane (IPv6), 503-504**
- data streams, 62**
- DCE, 19**

- DDoS attacks, 214-217**
- DE (Discard Eligible) bit, 141, 165-166**
- debug commands, 295-297**
- debug frame-relay lmi command, 178-179**
- debug ip nat command, 484**
- debug ppp authentication command, 118**
- debug ppp command, 102**
- debug ppp error command, 107-108**
- debug ppp negotiation command, 105-106**
- debug ppp packet command, 103-105**
- debugging DHCP, 459-460**
- decryption, 208**
- dedicated connection links, 31-32**
- dedicated lines, 130**
- demarc, 19, 66**
- DES (Data Encryption Standard), 411**
- designing WANs, 561-562**
- device hardening, 220**
- DH (Diffie-Hellman), 417**
- DHCP (Dynamic Host Configuration Protocol), 431-432**
  - clients, configuring, 447, 449
  - comparing with BOOTP, 435-436
  - debugging, 459-460
  - disabling, 442
  - dynamic address assignment, 432, 435
  - Easy IP, 432
  - manual address assignment, 433
  - messages, 436-438
  - troubleshooting, 456-458
  - verifying configuration, 442-447
- DHCP relay**
  - configuring, 449-453
  - verifying configuration, 458
- DHCP servers**
  - Cisco routers, configuring, 440-441
  - configuring with SDM, 453-455
- DHCPACK messages, 434**
- DHCPDISCOVER messages, 434, 438-440**
- DHCPOFFER messages, 434, 438-440**
- DHCPREQUEST messages, 434**
- DHCPv6, 498**
- dictionary attacks, 208**

**disabling**

- DHCP, 442
- router services, 253, 255

**displaying Frame Relay traffic statistics, 175-176****distributed networks, 9-10, 386****divide and conquer troubleshooting method, 547****DLCI (data link connection identifiers), 27**

- address mapping, 145-146
- local significance, 136
- verifying remote IP address-to-local translation, 177

**DMM (digital multimeters), 556****DMZ (demilitarized zone), 210****DNS (Domain Name System), securing, 255****dns-server command, 441****DOCSIS (Data-over-Cable Service Interface Specification), 388**

- Layer 2 requirements, 389

**documenting the network, 526, 533-534**

- end-system configuration table, 531-533
- network configuration table, 528-531
- network topology diagram, 527

**DoS attacks, 212, 214****downstream RF signal transmission, 388****DS0, 64****DSL (digital subscriber line), 38, 391**

- ADSL, 393, 395
- local loop, 392

**DSLAM (DSL Access Multiplexer), 392****DSR (Data Set Ready), 61****DTE (Data Termination Equipment), 19****DTE-DCE (Data Termination Equipment-Data Communication Equipment), 22**

- cable standard, 67, 70
- parallel-to-serial conversio, 71

**DTR (Data Terminal Ready), 61****dual stacking, 499-502****dynamic 6to4 tunneling, 499****dynamic ACLs, 358-360****dynamic address mapping, 145-146****dynamic IP address assignment, 432, 435****dynamic NAT, 465**

- configuring, 471-473

**E****Easy IP, 432****editing**

- named ACLs, 347-348
- numbered ACLs, 343
- comments, adding, 344-345*

**EIA standards, 17****EIGRP (Enhanced Interior Gateway Routing Protocol), securing, 261****electrical supply threats, mitigating, 203****electromagnetic spectrum, 387****enable passwords, protecting, 238****encapsulating protocols, 409****encapsulation, 24-25**

- Frame Relay, 140-141

**encapsulation hdlc command, 76****encapsulation type (Frame Relay), configuring, 153-155****encryption, 207, 410**

- asymmetric, 413
- hashes, 414
- symmetric, 413

**end-system configuration table, 531, 533****Enterprise Branch Architecture, 16****Enterprise Data Center Architecture, 16****Enterprise Edge Architecture, 15****Enterprise Teleworker Architecture, 16****environmental threats, mitigating, 203****ESP (Encapsulating Security Payload), 416****establishing**

- network baseline, 535-541
- PPP link with LCP, 89-91
- PPP sessions, 88

**EUI-64 interface ID assignment, 497****Euro-DOCSIS, 389****extended ACLs, 322**

- applying to interfaces, 353-355
- configuring, 351-353
- packets, testing, 349
- placing, 325-326
- port number lists, generating, 350-351

**external threats, 204**

## F

**FECN (Forward Explicit Congestion Notification), 141**

**FECN bit, 167**

**fields of DHCP messages, 436-438**

**flexibility of Frame Relay, 132**

**flow control, Frame Relay, 166-167**

**Frame Relay, 36, 73, 128, 567**

address mapping

*dynamic mapping, 145-146*

*Inverse ARP, 145*

*static mapping, 146*

configuring, 152

cost effectiveness, 131

data link layer, 134

DLCIs

*local significance, 136*

*verifying remote IP address-to-local translation, 177*

encapsulation process, 140-141

encapsulation type, configuring, 153-155

flexibility of, 132

flow control, 166-167

interfaces, verifying configuration, 172

leased-line design, 130

LMI, 148-149

*address mapping, 150-152*

*extensions, 149-150*

*frame format, 150*

*verifying statistics, 174*

physical layer, 134

reachability issues, solving, 159

static maps, configuring, 156-158

subinterfaces, 161-162

*configuring, 168-171*

topologies

*full-mesh topology, 143*

*partial-mesh topology, 145*

*star topology, 142*

traffic statistics, displaying, 175-176

troubleshooting, 178-179, 581-583

VCs, 134, 137

*multiple VCs on single access line, 137-139*

versus X.25, 133

**frame-relay interface-dlci command, 170**

**frames**

HDLC, 74-75

PPP, 87

frequency, 388

full-mesh topology, 143, 564

functions performed by ACLs, 318

## G-H

generating list of port numbers, 350-351

global networks, 9-10

**GRE (Generic Route Encapsulation) packets, 409**

hackers, 192

hardware threats, mitigating, 203

hardware troubleshooting tools, 555

hashes, 414

**HDLC encapsulation, 72-73**

configuring, 75

fields, 74-75

**headend, 39, 386**

**header structure of IPv6, 492**

**HIDS (host-based intrusion detection system), 223**

**hierarchical network model, 11-12**

**hierarchical topology, 566**

**HIPS (host-based intrusion prevention system), 223**

**HMAC (hashed message authentication code), 415**

**host option (wildcard masking), 337, 339**

**HSSI (High-Speed Serial Interface), 60**

**hub-and-spoke topology, 142**

## I

**IDS (intrusion detection system), 223**

**IEEE 802.11 standard, 400**

**IEEE 802.11b standard, 400**

**IEEE 802.11g standard, 400**

**IEEE 802.11n standard, 401**

**IFS (Cisco IOS Integrated File System), 276-280**

**implementation issues, 569**

**implicit “deny all” behavior (ACLs), 322**

**inbound ACLs, 319-320**

**inside networks, 463**

**interface serial command, 169**

**interfaces**

- ACLs, applying, 339-342, 353-355
- Frame Relay, verifying configuration, 172

**internal threats, 204****Internet connection options**

- broadband wireless, 40
- cable modem, 39
- DSL, 38
- Metro Ethernet, 43
- VPN technology, 41

**Inverse ARP, 145**

- address mapping, 150-152

**inverse masks, 333****ip dhcp excluded-address command, 440****ip dhcp ppol command, 440****ip helper-address command, 451****IP subnets, matching with wildcard masks, 334-337****IPS (intrusion prevention system), 223****IPsec, 416, 418****IPv6, 485, 489**

- address management, 497
- addressing, 493
  - IPv6 global unicast address, 494*
  - loopback addresses, 496*
  - private addresses, 496*
  - reserved addresses, 496*
  - unspecified addresses, 497*
- comparing with IPv4, 490-493
- configuring, 506
- DHCPv6, 498
- dual stacking, 499
- enabling on router
  - control plane operation, 504*
  - data plane operation, 504*
- manual configuration, 502
- RIPng, 505
  - configuring, 508-510*
  - troubleshooting, 510*
- routing configurations, 503
- stateless autoconfiguration, 498
- transition mechanisms
  - dual stacking, 500-502*
  - tunneling, 499, 502*

**ISATAP (Intrasite Automatic Tunnel Addressing Protocol), 500****ISDN, 33-35, 63**

- cost effectiveness versus Frame Relay, 132

**ISO standards, 17****ISO/IEC 27002, 198****isolating physical layer problems, 576****ISPs**

- oversubscription, 163
- WANs, troubleshooting, 570

**J-K-L****jabber, 574****LAPB (Link Access Procedure, Balanced), 73****LAPF (Link Access Procedure for Frame Relay), 140****Layer 2 DOCSIS requirements, 389****Layer 2 WAN protocols, 73****layered models**

- OSI reference model, 542
- TCP/IP model, 543

**layered PPP architecture**

- LCP, 85
- NCP, 86

**LCP (Link Control Protocol), 85**

- establishing link with PPP, 89-91
- packets, 92

**lease command, 441****leased lines, 29-32****link connection options, 29-30**

- choosing, 44-47
- circuit-switched connections, 32-35
- dedicated connection links, 31-32

**packet-switched connections, 35-37****link quality monitoring, configuring PPP, 99****link-local addresses (IPv6), 496****LMI (Local Management Interface), 148-149**

- address mapping, 150,-152
- extensions, 149-150
- frame format, 150
- statistics, verifying, 174

**load balancing (PPP), configuring, 100****local loop, 19, 392**

local significance of DLCIs, 136  
lock-and-key ACLs, 358-360  
logical network diagrams, 571-572  
logical topologies, 571  
loopback addresses (IPv6), 496  
LOphtCrack, 208  
lost passwords, recovering, 297, 299-300

## M

---

MAC layer DOCSIS requirements, 389  
maintenance threats, mitigating, 204  
malicious code attacks, 217-219  
MAN (metropolitan area network), 15  
manual interface ID assignment, 497  
manual IP address allocation, 432  
manual IP address assignment, 433  
manual IPv6-over-IPv4 tunneling, 499  
MD5, 415  
measuring performance data, 538-541  
meshed municipal Wi-Fi networks, 397  
messages, DHCP, 436-440  
Metro Ethernet, 43  
microfilters, 393  
mitigating security threats

- antivirus software, 220
- device hardening, 220
- HIPS, 223
- IDS, 223
- IPS, 223
- Network Security Wheel, 226, 228
- operating system patches, 223-224
- personal firewalls, 221

MITM attacks, 211  
Mitnick, Kevin, 204  
modems, 20  
monitoring ACLs, 346-347  
MPLS (Multi-Protocol Label Switching), 24  
Multilink PPP, configuring, 100  
multiple LAN networks, 6-7  
multipoint subinterfaces, 161  
Municipal Wi-Fi, 40  
MUX (multiplexer), 62

## N

---

NAM (network analysis module), 555  
named ACLs, 324

- creating, 345-346
- editing, 347-348

named extended ACLs, creating, 355-357  
NAT (Network Address Translation), 431, 460-462

- benefits of, 468-470
- comparing with NAT overloading, 468
- dynamic NAT, 465
  - configuring, 471-473
- inside networks, 463
- outside networks, 464
- static NAT, 465
  - configuring, 470-471
- troubleshooting, 483-485, 589-590
- verifying configuration, 479, 483

NAT overload, 466-467

- comparing with NAT, 468
- configuring, 473-475
  - for multiple public IP addresses, 475-477
- troubleshooting, 488-489
- verifying configuration, 479, 483

NAT-PT (NAT-Protocol Translation), 500  
NCP (Network Control Protocol), 86, 95  
need for WANs, 5  
networks, documenting, 526-534  
network baseline, establishing, 535-541  
network configuration table, 528-531  
network diagrams, logical, 571-572  
network layer, troubleshooting, 585-586  
network security, routers, 232-235

- activity logging, 249-250
- AutoSecure, implementing, 263-264
- Cisco IOS security features, applying, 235-248
- network services, securing, 250-258, 260-263
- SDM, implementing, 264, 266-267, 270, 272
- software images maintenance, 275-280, 282-294

Network Security Wheel, 226, 228  
network topology diagram, 527  
NID (network interface device), 393  
NMS tools, 551  
North American IPv6 Task Force, 489

**NTP (Network Time Protocol), securing, 255**

**null modem, 68**

**numbered ACLs, 324**

configuring, 329

editing, 343

*comments, adding, 344-345*

## O

**one-way satellite Internet systems, 399**

**open networks, 194, 197**

**operating system patches, 222-223**

**OSI model, 542**

data link layer protocols, 23-24

*encapsulation, 24-25*

physical layer, 18

*DTE/DCE interface, 22*

**OSPF (Open Shortest Path First), securing, 262, 263**

**OTDRs (optical time-domain reflectometers), 556**

**outbound ACLs, 319-320**

**outside networks, 464**

**oversubscription, 163**

## P

**packet filtering, 313, 316. See also ACLs**

**packet-switched networks, 27**

ATM, 37

connecting to, 29

Frame Relay, 36

VCs, 28

X.25, 35

**packets**

Frame Relay, encapsulation process, 140-141

LCP, 92

testing with extended ACLs, 349

**PAP (Password Authentication Protocol), 109-110**

configuring, 115-118

**parallel communication, 57**

**parameters for access-list command, 329-330**

**partial-mesh topology, 145, 566**

**passenger protocols, 409**

**passphrases, 236**

**password attacks, 208**

**passwords, 236-237**

minimum length, 240

recovering, 297, 299-300

**payload-only encryption, 208**

**performance, measuring, 538-541**

**personal firewalls, 221**

**phishing, 192, 205**

**phreakers, 192**

**physical layer, 18**

DTE/DCE interface, 22

troubleshooting, 574-577

**physical layer protocols, 18**

**physical threats to security, 202, 204**

**physical topologies, 571**

**ping-of-death attacks, 213**

**placing ACLs, 324**

extended ACLs, 325-326

standard ACLs, 325

**point-to-point subinterfaces, 161**

**POP (point of presence), 21**

**port forwarding, configuring, 477-479**

**port numbers, 311**

generating, 350-351

**port redirection, 210**

**port speed, 162**

**portable network analyzers, 558**

**POTS, 391**

**PPP (Point-to-Point Protocol), 56, 73, 83**

authentication

*configuring, 115-118*

*troubleshooting, 118-119*

authentication process, 112, 115

authentication protocols

*CHAP, 110*

*PAP, 109-110*

compression, configuring, 99

configuring, 94-98

frames, 87

LCP, 85

*packets, 92*

*link establishment, 89-91*

link quality monitoring, configuring, 99

load balancing, configuring, 100

NCP, 86, 95



- serial encapsulation
  - troubleshooting, 102-108*
  - verifying, 101-102*
- session establishment, 88
- troubleshooting, 579-580
- ppp authentication command, 116**
- PRI (primary rate interface), 34**
- private addresses (IPv6), 496**
- private IP addresses, 461**
- PSK (preshared key), 415**
- PVCs, 28, 135, 163**
  - displaying statistics, 175-176

## Q-R

**QoS, 383**

- rainbow tables, 208
- reachability, extending on Frame Relay networks, 159
- reconnaissance attacks, 206-207
- recovering lost passwords, 297, 299-300
- reflexive ACLs, 360, 363
- remarks, adding to ACLs, 331-332
  - numbered ACLs, 344-345
- remote access VPNs, 406
- remote administration of routers, securing, 241, 243-248
- remote connection options for teleworker services, 380
- remote-access VPNs, 42
- removing ACLs, 330-331
- required telecommuting components, 383-384
- required VPN components, 407
- researching troubleshooting methods, 558
- reserved addresses (IPv6), 496
- restoring software images, 288, 290-292, 294
- RIPng, 505**
  - configuring, 508-510
  - troubleshooting, 510
- RIPv2, securing, 258, 260**
- RIR (Regional Internet Registry), 460**
- routers, 21**
  - ACLs, processing logic, 321
  - activity logging, 249-250

- AutoSecure, implementing, 263-264
- Cisco IOS security features, applying, 235-236
  - passphrases, 236*
  - passwords, 236-237*
  - remote administration, 241, 243-248*
  - Type 5 encryption, 238*
  - Type 7 encryption, 237*
- core routers, 21
- network services, securing, 250-258, 260-263
- SDM, implementing, 264, 266-267, 270, 272, 274
- securing, 232-233, 235
- software image maintenance, 275-294
- routing protocols, securing, 259-260**
  - EIGRP, 261
  - OSPF, 262-263
  - RIPv2, 258, 260
- RS-232, 59**
- RSA (Rivest, Shamir, and Adleman), 412, 415**

## S

- S-CDMA (synchronous code-division multiple access), 389**
- SANS Institute, 230**
- satellite Internet, 40, 399**
- SDM (Cisco Router and Security Device Manager)**
  - DHCP servers, configuring, 453-455
  - implementing on routers, 264, 266-267, 270, 272, 274
- SDSL (synchronous DSL), 392**
- security**
  - attacks
    - access attacks, 208*
    - DDoS, 214, 217*
    - DoS, 212*
    - malicious code attacks, 217-219*
    - mitigating, 220-223*
    - MITM, 211*
    - port redirection, 210*
    - reconnaissance attacks, 206-207*
    - seven-step process, 193*
    - trust exploitation, 209-210*
    - types of, 193-194*
  - closed networks, 19, 197
  - importance of, 191
  - Network Security Wheel, 226, 228
  - network vulnerabilities, 204
  - of VPNs, 408

- open networks, 194, 197
- physical threats, 202, 204
- social engineering, 205
- vulnerabilities, 199
  - configuration weaknesses*, 201
  - technological weaknesses*, 200
- security policies, 229**
  - components of, 230-231
  - creating, 197, 199
  - functions of, 229
- selecting troubleshooting technique, 547**
- selecting WAN link connections, 44-47**
- serial communication, 56-58**
  - demarc, 66
  - DTE-DCE, 67
    - cable standards*, 67, 70
    - parallel-to-serial conversion*, 71
  - HDLC encapsulation, 72-73
    - configuring*, 75
    - frame fields*, 74-75
  - standards, 59-60
  - TDM, 61
    - DS0*, 64
    - ISDN*, 63
    - SONET*, 64
    - STDM*, 63
- serial interfaces, troubleshooting, 76-82**
- serial PPP encapsulation**
  - troubleshooting, 102-108
  - verifying, 101-102
- SHA-1 (Secure Hash Algorithm 1), 415**
- shared networks, 567**
- show commands, 294**
- show controllers command, 81-82**
- show frame-relay lmi command, 148, 174**
- show frame-relay map command, 145, 158**
- show frame-relay pvc command, 175-176**
- show interface command, 507**
- show interfaces command, 172**
- show interfaces serial command, 76-81, 118, 155**
- show ip dhcp binding command, 442**
- show ip dhcp conflict command, 456**
- show ip dhcp server statistics command, 443**
- show ip interface command, 449**
- show ip nat statistics command, 481**
- show ip nat translations command, 480**
- show running-config command, 343**
- single LAN networks, 6**
- site-local addresses (IPv6), 496**
- site-to-site VPNs, 42, 405**
- SLDC (Synchronous Data Link Control), 73**
- SLIP (Serial Line Internet Protocol), 73**
- small office networks, 6**
- Smurf attacks, 214**
- SNMP (Simple Network Management Protocol), securing, 255**
- social engineering, 205**
- software image maintenance, 27-283**
  - on Cisco IOS Software, 283-294
- software troubleshooting tools**
  - knowledge bases, 552
  - NMS tools, 551
- SONET, 64**
- spammers, 192**
- split horizon, solving Frame Relay reachability issues, 159**
- splitters, 393**
- SSH (Secure Shell), securing remote administration of routers, 243, 245-248**
- standard ACLs, 322-323**
  - configuring, 327-329
  - placing, 325
- standards**
  - for serial communication, 59-60
  - for wireless broadband, 400
- star topology, 142, 564**
- stateless autoconfiguration (IPv6), 498**
- static address mapping, 146**
- static maps, configuring Frame Relay, 156-158**
- static NAT, 465**
  - configuring, 470-471
- STDM (statistical time division multiplexing), 63**
- STP (Spanning Tree Protocol) loops, troubleshooting, 583-584**
- structured threats, 204**
- subinterfaces**
  - configuring, 168-171
  - Frame Relay, 161-162

**subscriber drop, 387**

**SVCs (switched virtual circuits), 28**

**switches, 21**

**symmetric encryption, 412-413**

**symptoms**

of application layer problems, 591

of data link layer problems, 577

gathering for troubleshooting process, 548-551

of physical layer problems, 574

**SYN flood attacks, 213**

**systematic troubleshooting approach, 541**

## T

---

**TCP, 310-311**

**TCP/IP model, 543**

**TDM (time-division multiplexing), 26, 33, 61**

DS0, 64

ISDN, 63

SONET, 64

STDM, 63

**TDMA (time-division multiple access), 389**

**teleworker services**

business requirements, 379

Enterprise Teleworker Architecture, 16

remote connection options, 380

required components, 383-384

VPNs, 402

*asymmetric encryption, 413*

*authentication, 415*

*benefits of, 404*

*encryption, 410*

*hashes, 414*

*IPsec, 416-418*

*island analogy, 403*

*remote access, 406*

*required components, 407*

*security, characteristics, 408*

*site-to-site, 405*

*symmetric encryption, 413*

*tunneling, 409*

WAN connection options, 384

*broadband wireless, 396-400*

*cable, 385-391*

*DSL, 391-395*

**Teredo tunneling, 500**

**testing packets with extended ACLs, 349**

**threat control, 224**

**TIA standards, 17**

**time-based ACLs, 363-364**

**top-down troubleshooting method, 546**

**topologies, 564-567**

full-mesh topology, 143

partial-mesh topology, 145

star topology, 142

**traffic, 562, 564**

**transceivers, 392**

**transport layer**

NAT, troubleshooting, 588-589

troubleshooting, 586-587

**transport protocols, TCP, 310-311**

**tree-and-branch cable system, distribution network, 386**

**Trojan horse attacks, 219**

**troubleshooting, 545. *See also* troubleshooting tools**

ACLs, 365-367

application layer, 589-594

bottom-up method, 545

data link layer, 577-579

*Frame Relay, 581-583*

*PPP, 579-580*

*STP loops, 583-584*

DHCP, 456-458

divide-and-conquer method, 547

Frame Relay, 178-179

from ISP perspective, 570

IPv6, RIPng, 510

method, selecting, 547

NAT, 483-485

NAT overload, 483-485

network layer, 585-586

physical layer, 573-576

PPP authentication, 118-119

serial interfaces, 76-82

serial PPP encapsulation, 102-108

symptoms, gathering, 548-551

systematic approach, 541

top-down method, 546

transport layer, 586-587

*NAT, 588-589*

**troubleshooting commands, 294**

show commands, 294

**troubleshooting tools**

hardware tools, 555

research activity, 558

software tools

*knowledge bases, 552*

*NMS tools, 551*

**trust exploitation, 209-210****TTY lines, securing remote administration of routers, 243****tunneling, 383, 409, 477-479, 499, 502****two-way satellite Internet systems, 399****Type 5 encryption, 238****Type 7 encryption, 237**

## U

**UDP port numbers, 311****unspecified addresses (IPv6), 497****unstructured threats, 204****upgrading software images, 285, 287-288****upstream RF signal transmission, 388****username passwords, protecting, 239**

## V

**V.35 standard, 59****VCs, 27-28, 134**

multiple VCs on single access line, 137-139

**verifying**

ACLs, 346-347

DHCP, 442-447

DHCP relay configuration, 458

Frame Relay configuration

*DLCIs, 177*

*interfaces, 172*

*LMI statistics, 174*

NAT configuration, 479, 483

serial PPP encapsulation, 101-102

**viruses, 218****VPNs, 41, 402**

authentication, 415

benefits of, 404

encryption, 410

*asymmetric, 413*

*hashes, 414*

*symmetric, 413*

IPsec, 416-418

island analogy, 403

remote access, 406

required components, 407

security, characteristics, 408

site-to-site, 405

tunneling, 409

**VTY access**

controlling with ACLs, 342-343

securing remote administration of routers, 243-245

**vulnerabilities, 199**

configuration weaknesses, 201

of networks, 204

technological weaknesses, 200

## W

**Walson, John, 386****WAN connection options for teleworker services, 384****See also WANs**

broadband wireless, 396

*mesh municipal Wi-Fi network, 397*

*satellite Internet, 399*

*single wireless router deployment, 397*

*standards, 400*

*WiMAX, 398*

cable, 385-386

*CMTS, 390-391*

*DOCSIS, 388-389*

*electromagnetic spectrum, 387*

DSL, 391

*ADSL, 393-395*

*local loop, 392*

**WANs, 3, 8**

global networks, 9-10

need for, 5

purpose of, 46

**white hats, 191****Wi-Fi Alliance, 400****wildcard masks, 332**

bit keywords, 337-339

calculating, 336-337

IP subnets, matching, 334-337

**WiMAX (Worldwide Interoperability for Microwave Access) , 40, 398**

**wireless connections, 40**

**wiring closets, 11**

**worms, 217**

## **X-Y-Z**

---

**X.25 networks, 35, 133**

**xmodem command, restoring software images,  
291-292, 294**